

Product datasheet for **CS647653**

Frozen Tissue Sections, Colon

Product data:

Product Type:	Frozen Sections
Disease State:	Cancer
Diagnosis Category:	Colorectal Cancer
Tissue:	Colon
Frozen Sample ID:	FR6A38A537
Case ID:	CU0000014728
Tissue of Origin:	Colon
Site of Finding:	Liver
Appearance:	T
Sample Diagnosis (from Pathology Verification):	Adenocarcinoma of colon, metastatic
Normal:	0%
Lesional:	0%
Tumor:	40%
Tumor Hypo/Acellular Stroma:	0%
Tumor Hypercellular Stroma:	50%
Necrosis:	10%
Pathology Verification notes from H&E review:	Tumor Stroma (Cellular): Desmoplastic reaction
CASE Diagnosis (from medical center path report):	Adenocarcinoma of colon, metastatic
Age:	63
Gender:	Male
Tumor Grade:	Not Reported



[View online »](#)

Minimum Stage Grouping: IV

T (Extent of Primary Tumor): TX

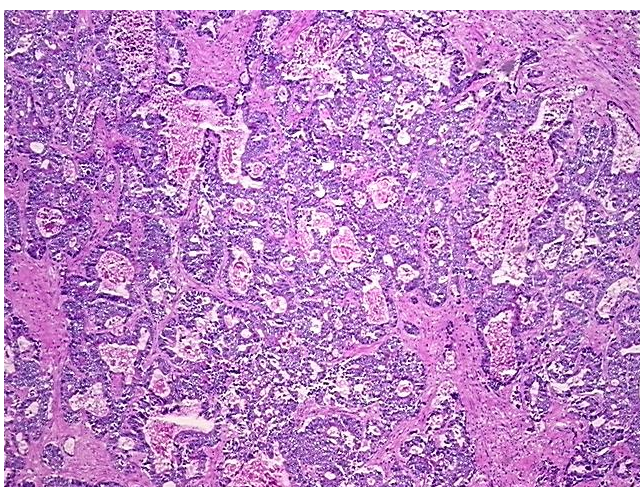
N (Lymph node metastasis): NX

M (Distant metastasis): M1

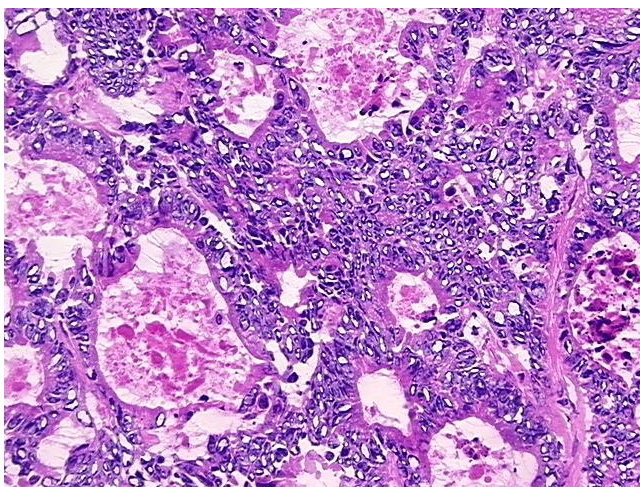
Storage: Store frozen tissue sections at -80°C.

Stability: All frozen tissue sections are stable for 1 year from date of purchase if stored at -80°C without repeated freeze/thaws.

Product images:



4x Image



20x Image