

Product datasheet for **CS647450**

Frozen Tissue Sections, Neural tissue

Product data:

Product Type:	Frozen Sections
Disease State:	Cancer
Diagnosis Category:	Chordoma
Tissue:	Neural tissue
Frozen Sample ID:	FR00039E50
Case ID:	CU0000014719
Tissue of Origin:	Neural tissue
Site of Finding:	Soft tissue
Appearance:	T
Sample Diagnosis (from Pathology Verification):	Chordoma
Normal:	0%
Lesional:	0%
Tumor:	80%
Tumor Hypo/Acellular Stroma:	20%
Tumor Hypercellular Stroma:	0%
Necrosis:	0%
CASE Diagnosis (from medical center path report):	Chordoma
Age:	48
Gender:	Male
Tumor Grade:	AJCC G1: Well differentiated
Minimum Stage Grouping:	IA



[View online »](#)

T (Extent of Primary Tumor): T1

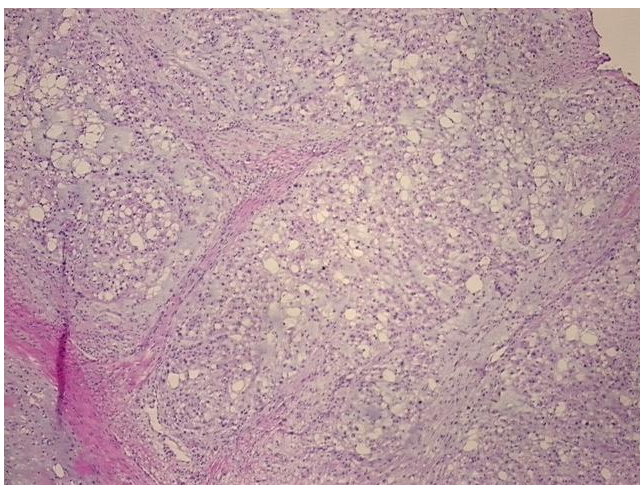
N (Lymph node metastasis): NX

M (Distant metastasis): MX

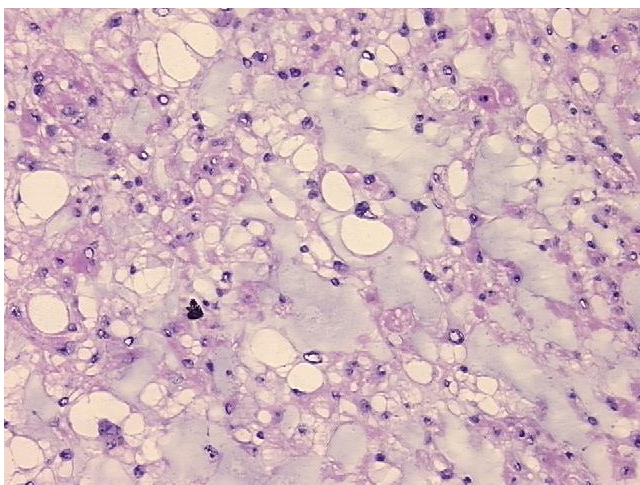
Storage: Store frozen tissue sections at -80°C.

Stability: All frozen tissue sections are stable for 1 year from date of purchase if stored at -80°C without repeated freeze/thaws.

Product images:



4x Image



20x Image