

## Product datasheet for **CS646770**

### Frozen Tissue Sections, Thyroid gland

#### Product data:

|   |   |
|---|---|
| Product Type:                                     | Frozen Sections                                     |
| Disease State:                                    | Cancer  |
| Diagnosis Category:                               | Thyroid Cancer                                      |
| Tissue:   | Thyroid gland                                       |
| Frozen Sample ID:                                 | FR0003B24B  |
| Case ID:  | CU0000014669  |
| Tissue of Origin:                                 | Thyroid gland                                       |
| Site of Finding:                                  | Thyroid gland                                       |
| Appearance:                                       | Tumor   |
| Sample Diagnosis (from Pathology Verification):   | Carcinoma of thyroid, papillary, follicular variant |
| Normal:   | 0%  |
| Lesional:   | 0%  |
| Tumor:  | 90%   |
| Tumor Hypo/Acellular Stroma:                      | 5%  |
| Tumor Hypercellular Stroma:                       | 5%  |
| Necrosis:   | 0%  |
| CASE Diagnosis (from medical center path report): | Carcinoma of thyroid, papillary, follicular variant |
| Age:  | 52  |
| Gender:   | Female  |
| Tumor Grade:                                      | Not Reported  |
| Minimum Stage Grouping:                           | II  |



[View online »](#)

T (Extent of Primary Tumor): pT2

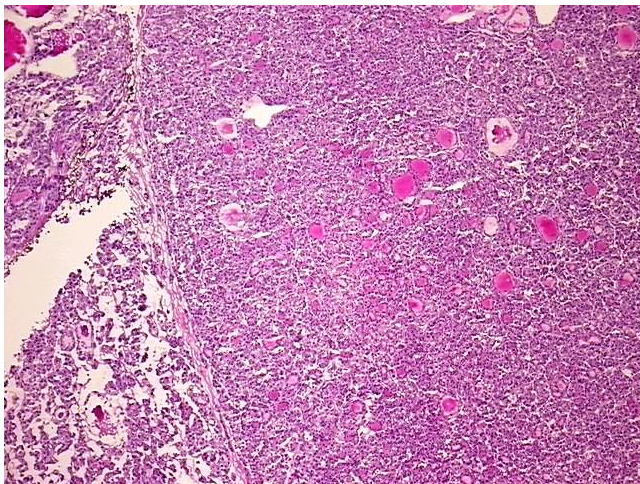
N (Lymph node metastasis): pN0

M (Distant metastasis): pMX

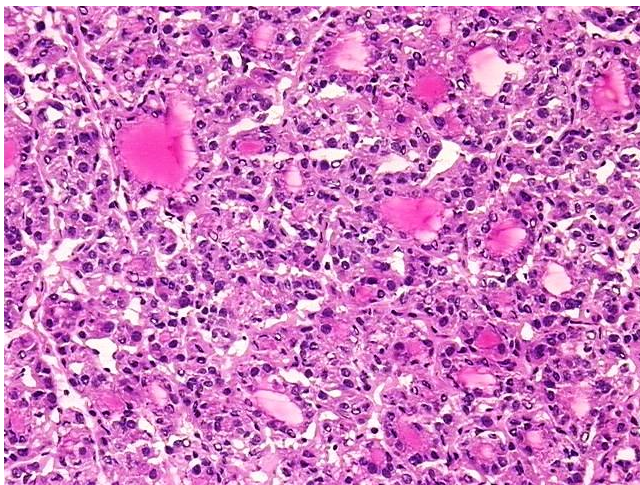
Storage: Store frozen tissue sections at -80°C.

Stability: All frozen tissue sections are stable for 1 year from date of purchase if stored at -80°C without repeated freeze/thaws.

### Product images:



4x Image



20x Image