

## Product datasheet for **CS646406**

### Frozen Tissue Sections, Colon: right

#### Product data:

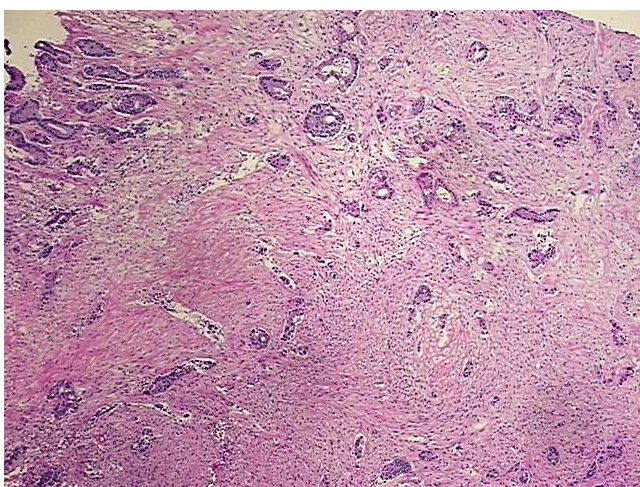
Product Type:	Frozen Sections
Disease State:	Cancer
Diagnosis Category:	Colorectal Cancer
Tissue:	Colon
Frozen Sample ID:	FR5B344019
Case ID:	CU0000014641
Tissue of Origin:	Colon: right
Site of Finding:	Colon: right
Appearance:	Tumor
Sample Diagnosis (from Pathology Verification):	Adenocarcinoma of colon
Normal:	10%
Lesional:	0%
Tumor:	30%
Tumor Hypo/Acellular Stroma:	0%
Tumor Hypercellular Stroma:	60%
Necrosis:	0%
Pathology Verification notes from H&E review:	Tumor Stroma (Cellular): Desmoplastic reaction
CASE Diagnosis (from medical center path report):	Adenocarcinoma of colon
Age:	64
Gender:	Male
Tumor Grade:	AJCC G2: Moderately differentiated



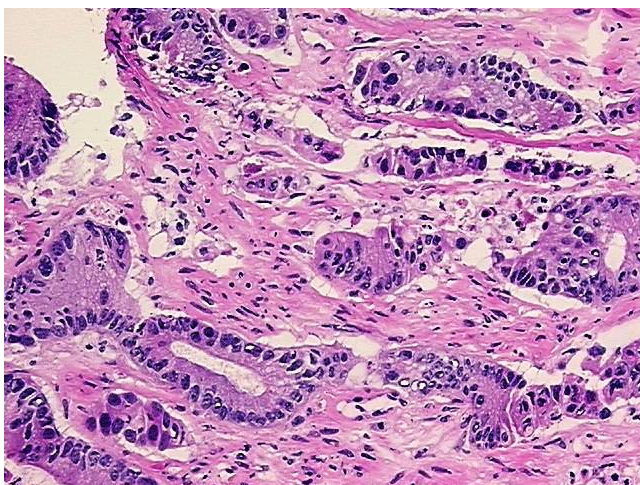
[View online »](#)

Minimum Stage Grouping:	IIIB
T (Extent of Primary Tumor):	pT4
N (Lymph node metastasis):	pN1
M (Distant metastasis):	pMX
Storage:	Store frozen tissue sections at -80°C.
Stability:	All frozen tissue sections are stable for 1 year from date of purchase if stored at -80°C without repeated freeze/thaws.

### Product images:



4x Image



20x Image