

Product datasheet for **CS646103**

Frozen Tissue Sections, Lung: right upper lobe

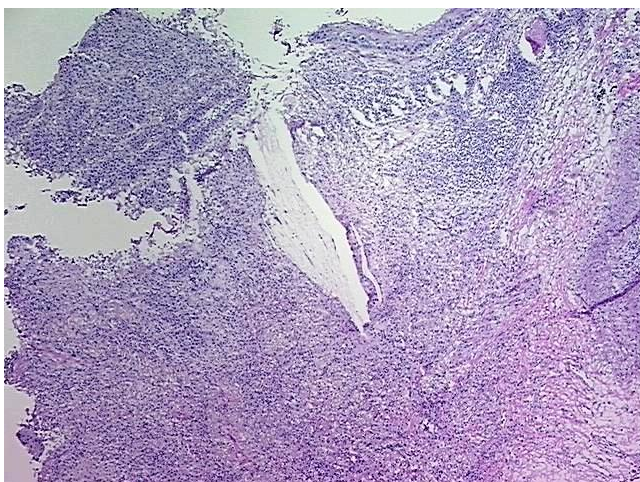
Product data:

| | |
|---|--|
| Product Type: | Frozen Sections |
| Disease State: | Cancer |
| Diagnosis Category: | Lung Cancer |
| Tissue: | Lung |
| Frozen Sample ID: | FR0003BBB5 |
| Case ID: | CU0000014428 |
| Tissue of Origin: | Lung: right upper lobe |
| Site of Finding: | Lung: right upper lobe |
| Appearance: | Tumor |
| Sample Diagnosis (from Pathology Verification): | Carcinoma of lung, squamous cell |
| Normal: | 0% |
| Lesional: | 70% |
| Tumor: | 15% |
| Tumor Hypo/Acellular Stroma: | 0% |
| Tumor Hypercellular Stroma: | 15% |
| Necrosis: | 0% |
| Pathology Verification notes from H&E review: | Tumor Stroma (Cellular): Desmoplastic reaction; Lesion (70%): Pneumonia, post-obstructive 30%, Fibrous scarring 70%; Inflammation: Moderate Mixed inflammatory infiltrate; Other Features/Comments: No normal architecture in lesional component |
| CASE Diagnosis (from medical center path report): | Carcinoma of lung, squamous cell |
| Age: | 68 |
| Gender: | Female |

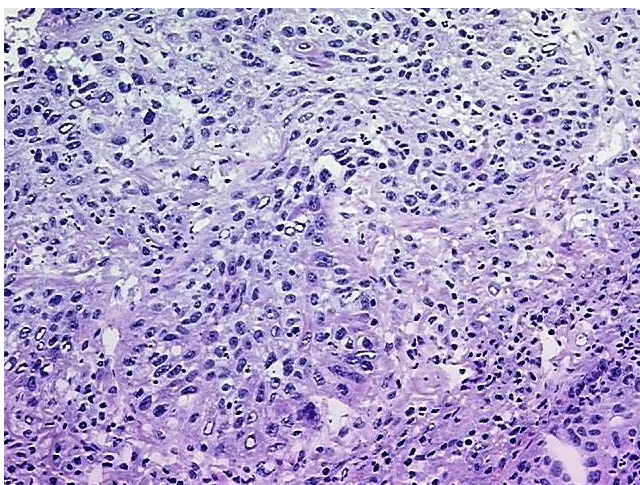


[View online »](#)

| | |
|------------------------------|--|
| Tumor Grade: | AJCC G2: Moderately differentiated |
| Minimum Stage Grouping: | IB |
| T (Extent of Primary Tumor): | pT2 |
| N (Lymph node metastasis): | pN0 |
| M (Distant metastasis): | pMX |
| Storage: | Store frozen tissue sections at -80°C. |
| Stability: | All frozen tissue sections are stable for 1 year from date of purchase if stored at -80°C without repeated freeze/thaws. |

Product images:

4x Image



20x Image