

## Product datasheet for **CS645939**

### Frozen Tissue Sections, Small intestine

#### Product data:

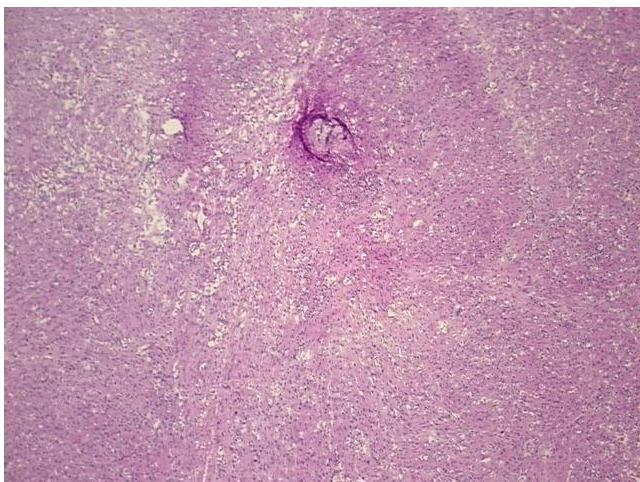
Product Type:	Frozen Sections
Disease State:	Other Disease
Diagnosis Category:	Gastrointestinal Stromal Tumor (GIST)
Tissue:	Small intestine
Frozen Sample ID:	FR0003B4DF
Case ID:	CU0000014405
Tissue of Origin:	Small intestine
Site of Finding:	Small intestine
Appearance:	T
Sample Diagnosis (from Pathology Verification):	Gastrointestinal stromal tumor of small intestine
Normal:	0%
Lesional:	0%
Tumor:	95%
Tumor Hypo/Acellular Stroma:	5%
Tumor Hypercellular Stroma:	0%
Necrosis:	0%
CASE Diagnosis (from medical center path report):	Gastrointestinal stromal tumor of small intestine
Age:	38
Gender:	Female
Tumor Grade:	Not Reported
Minimum Stage Grouping:	Not Reported



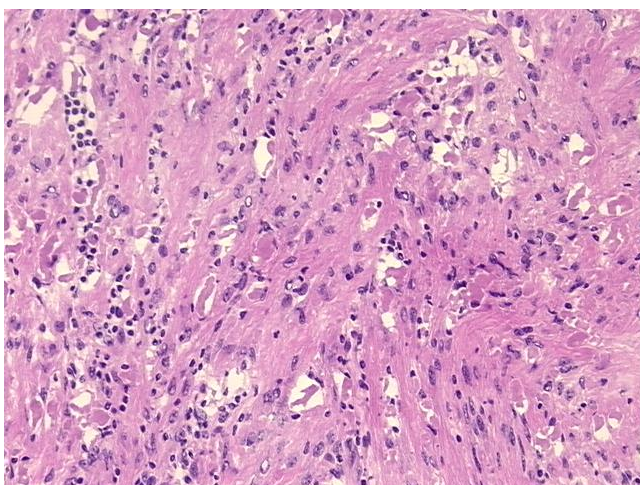
[View online »](#)

T (Extent of Primary Tumor):	Not Reported
N (Lymph node metastasis):	Not Reported
M (Distant metastasis):	Not Reported
Diagnostic Test Results:	MART-1 ~ Melanoma Marker ~ Melan-A,Negative; HMB45 melanoma antigen ~ GP100 ! by IHC,Negative; S100 protein,Positive, focal; Desmin ! by IHC,Negative; CD34 ~ HPCA ! by IHC,Negative; MSA ~ Muscle Specific Actin,Negative; CD117 ~ C-kit ~ SCFR
Storage:	Store frozen tissue sections at -80°C.
Stability:	All frozen tissue sections are stable for 1 year from date of purchase if stored at -80°C without repeated freeze/thaws.

### Product images:



4x Image



20x Image