

## Product datasheet for **CS645686**

### Frozen Tissue Sections, Lung: right upper lobe

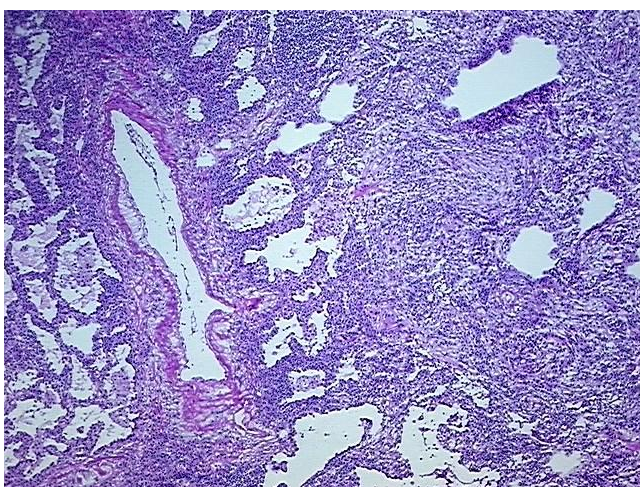
#### Product data:

Product Type:	Frozen Sections
Disease State:	Cancer
Diagnosis Category:	Lung Cancer
Tissue:	Lung
Frozen Sample ID:	FR00039A08
Case ID:	CU0000014387
Tissue of Origin:	Lung: right upper lobe
Site of Finding:	Lung: right upper lobe
Appearance:	Tumor
Sample Diagnosis (from Pathology Verification):	Carcinoma of lung, squamous cell
Normal:	70%
Lesional:	0%
Tumor:	20%
Tumor Hypo/Acellular Stroma:	0%
Tumor Hypercellular Stroma:	10%
Necrosis:	0%
Pathology Verification notes from H&E review:	Tumor Stroma (Cellular): Desmoplastic reaction; Inflammation: Severe Mixed inflammatory infiltrate; Non Tumor Structures: 90% Alveoli, 10% Fibrovascular septa
CASE Diagnosis (from medical center path report):	Carcinoma of lung, squamous cell
Age:	74
Gender:	Male
Tumor Grade:	AJCC G3: Poorly differentiated

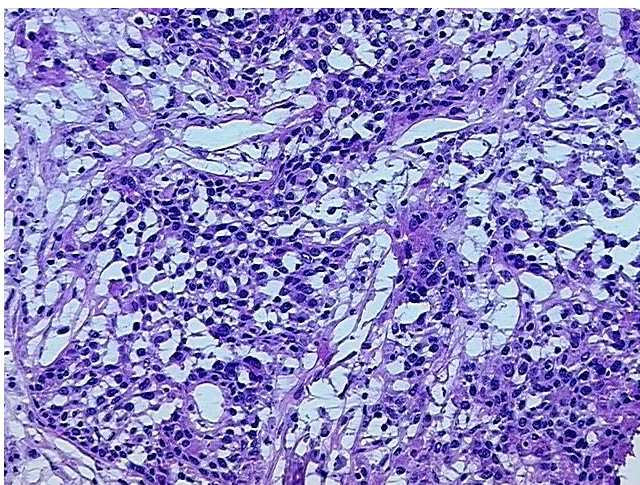


[View online »](#)

Minimum Stage Grouping:	IIA
T (Extent of Primary Tumor):	pT1
N (Lymph node metastasis):	pN1
M (Distant metastasis):	pMX
Storage:	Store frozen tissue sections at -80°C.
Stability:	All frozen tissue sections are stable for 1 year from date of purchase if stored at -80°C without repeated freeze/thaws.

**Product images:**

4x Image



20x Image