

## Product datasheet for **CS645491**

### Frozen Tissue Sections, Lymphoid tissue

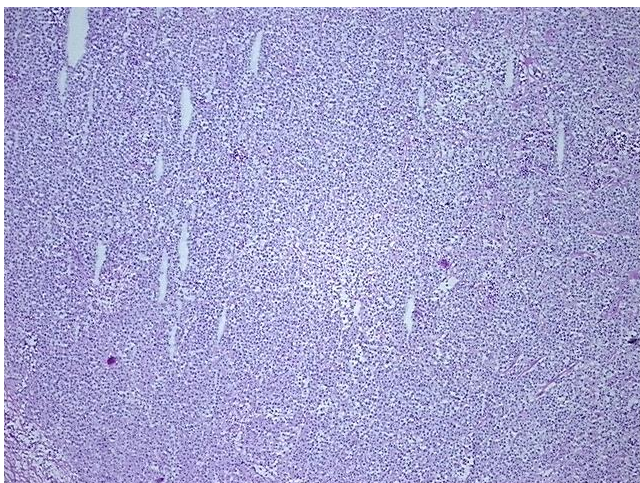
#### Product data:

Product Type:	Frozen Sections
Disease State:	Cancer
Diagnosis Category:	Lymphoma
Tissue:	Lymphoid tissue
Frozen Sample ID:	FR000396C0
Case ID:	CU0000014371
Tissue of Origin:	Lymphoid tissue
Site of Finding:	Spleen
Appearance:	T
Sample Diagnosis (from Pathology Verification):	Lymphoma, large B-cell, diffuse
Normal:	0%
Lesional:	0%
Tumor:	65%
Tumor Hypo/Acellular Stroma:	5%
Tumor Hypercellular Stroma:	0%
Necrosis:	30%
Pathology Verification notes from H&E review:	Non-necrotic tumor area: 5 mm x 4 mm
CASE Diagnosis (from medical center path report):	Lymphoma, large B-cell, diffuse
Age:	34
Gender:	Male
Tumor Grade:	Not Reported

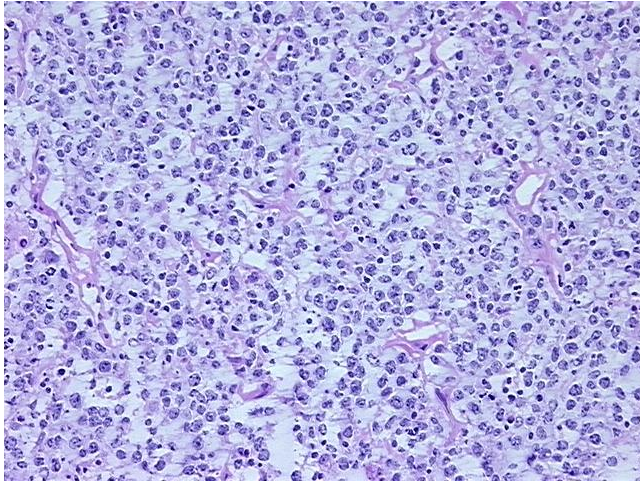


[View online »](#)

Minimum Stage Grouping:	IE
T (Extent of Primary Tumor):	Not applicable
N (Lymph node metastasis):	Not applicable
M (Distant metastasis):	Not applicable
Diagnostic Test Results:	Ki67 ~ MIB1 ! by IHC,Positive; BCL6 oncoprotein ! by IHC,Positive; BCL2 oncoprotein ! by IHC,Negative; CD10 ~ CALLA ~ Common ALL antigen ! by IHC,Positive; CD20 ~ B1 ~ Leu16 ! by IHC,Positive
Storage:	Store frozen tissue sections at -80°C.
Stability:	All frozen tissue sections are stable for 1 year from date of purchase if stored at -80°C without repeated freeze/thaws.

**Product images:**

4x Image



20x Image