

## Product datasheet for **CS645456**

### Frozen Tissue Sections, Lung

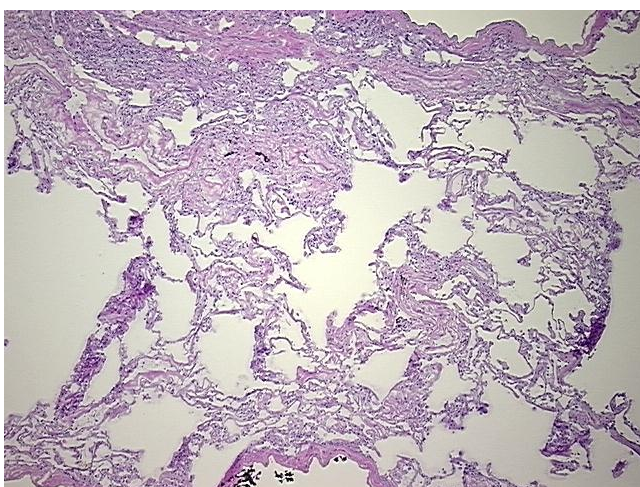
#### Product data:

Product Type:	Frozen Sections
Disease State:	Other Disease
Diagnosis Category:	Chronic Obstructive Pulmonary Disease (COPD)
Tissue:	Lung
Frozen Sample ID:	FR5B3441F4
Case ID:	CU0000014368
Tissue of Origin:	Lung
Site of Finding:	Lung
Appearance:	L
Sample Diagnosis (from Pathology Verification):	Emphysema
Normal:	0%
Lesional:	100%
Tumor:	0%
Tumor Hypo/Acellular Stroma:	0%
Tumor Hypercellular Stroma:	0%
Necrosis:	0%
Pathology Verification notes from H&E review:	Non Tumor Structures: 70% Alveoli, 30% Fibrovascular septa
CASE Diagnosis (from medical center path report):	Adenocarcinoma of lung
Age:	77
Gender:	Female
Tumor Grade:	AJCC G2: Moderately differentiated

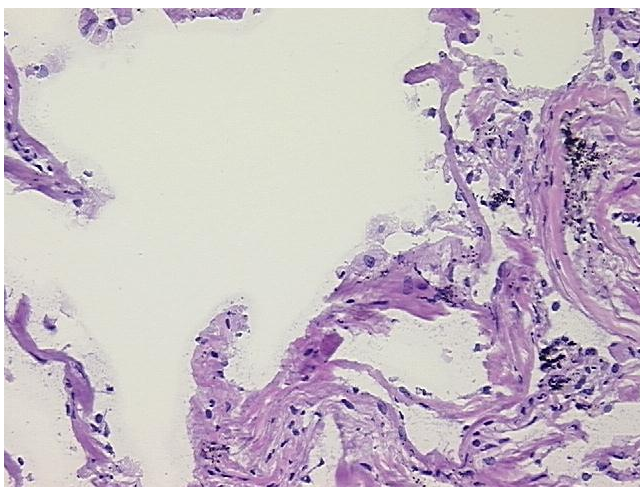


[View online »](#)

Minimum Stage Grouping:	IIB
T (Extent of Primary Tumor):	T2
N (Lymph node metastasis):	N1
M (Distant metastasis):	MX
Storage:	Store frozen tissue sections at -80°C.
Stability:	All frozen tissue sections are stable for 1 year from date of purchase if stored at -80°C without repeated freeze/thaws.

**Product images:**

4x Image



20x Image