

## Product datasheet for **CS645333**

### Frozen Tissue Sections, Parotid gland

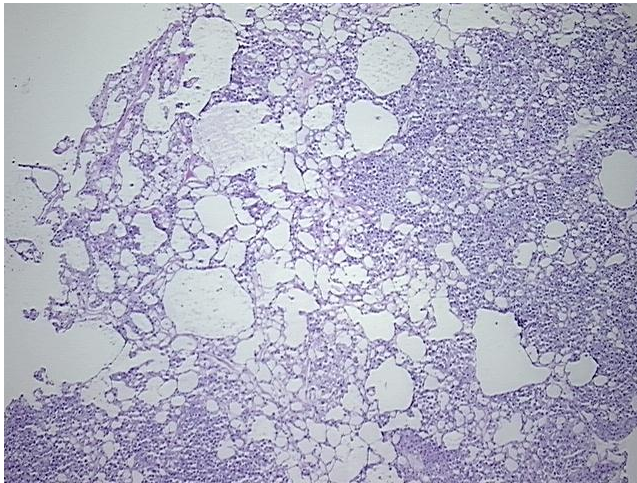
#### Product data:

Product Type:	Frozen Sections
Disease State:	Cancer
Diagnosis Category:	Head and Neck Cancer
Tissue:	Salivary gland
Frozen Sample ID:	FR0003B331
Case ID:	CU0000014358
Tissue of Origin:	Parotid gland
Site of Finding:	Parotid gland
Appearance:	T
Sample Diagnosis (from Pathology Verification):	Adenocarcinoma of parotid gland, acinic cell
Normal:	0%
Lesional:	0%
Tumor:	80%
Tumor Hypo/Acellular Stroma:	20%
Tumor Hypercellular Stroma:	0%
Necrosis:	0%
CASE Diagnosis (from medical center path report):	Adenocarcinoma of parotid gland, acinic cell
Age:	64
Gender:	Female
Tumor Grade:	Not Reported
Minimum Stage Grouping:	II

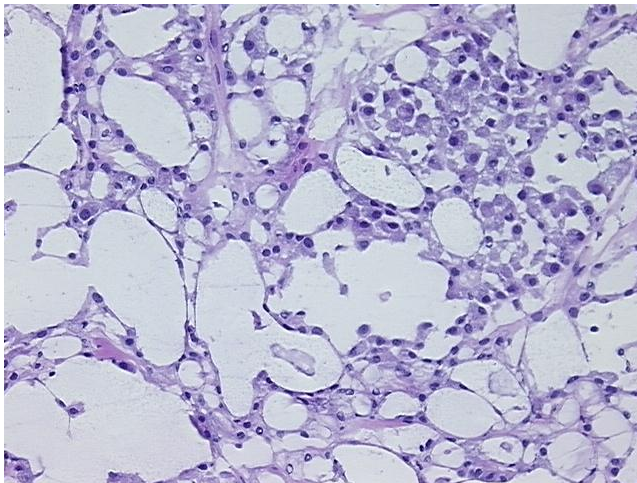


[View online »](#)

T (Extent of Primary Tumor):	T2
N (Lymph node metastasis):	NX
M (Distant metastasis):	MX
Diagnostic Test Results:	PAS with diastase ~ Periodic acid-Schiff stain with diastase, Positive
Storage:	Store frozen tissue sections at -80°C.
Stability:	All frozen tissue sections are stable for 1 year from date of purchase if stored at -80°C without repeated freeze/thaws.

**Product images:**

4x Image



20x Image