

Product datasheet for **CS645257**

Frozen Tissue Sections, Multiple digestive system sites

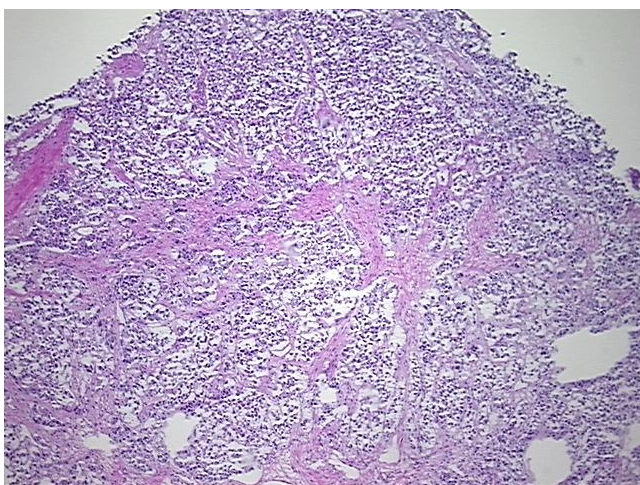
Product data:

Product Type:	Frozen Sections
Disease State:	Cancer
Diagnosis Category:	Cancer of Unknown Origin
Tissue:	Unknown origin
Frozen Sample ID:	FR0003A6AE
Case ID:	CU0000014153
Tissue of Origin:	Multiple digestive system sites
Site of Finding:	Liver
Appearance:	T
Sample Diagnosis (from Pathology Verification):	Carcinoma of unknown origin, neuroendocrine, metastatic
Normal:	0%
Lesional:	0%
Tumor:	40%
Tumor Hypo/Acellular Stroma:	60%
Tumor Hypercellular Stroma:	0%
Necrosis:	0%
Pathology Verification notes from H&E review:	Tumor Stroma (Hypo/Acellular): Desmoplastic reaction
CASE Diagnosis (from medical center path report):	Carcinoma of unknown origin, neuroendocrine, metastatic
Age:	57
Gender:	Male
Tumor Grade:	Not Reported

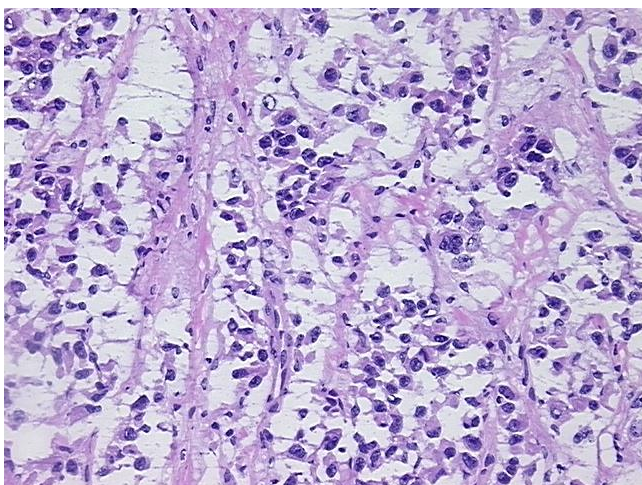


[View online »](#)

Minimum Stage Grouping:	IV
T (Extent of Primary Tumor):	TX
N (Lymph node metastasis):	NX
M (Distant metastasis):	M1
Diagnostic Test Results:	CEAp ~ CEA, polyclonal,Positive; Synaptophysin ~ SYN ! by IHC,Positive; Cytokeratin 7 ~ CK7 ! by IHC,Positive; Alpha-1-fetoprotein ~ AFP ! by IHC,Negative; CD10 ~ CALLA ~ Common ALL antigen ! by IHC,Negative; Cytokeratin AE1/AE3 ~ AE1/AE3 !
Storage:	Store frozen tissue sections at -80°C.
Stability:	All frozen tissue sections are stable for 1 year from date of purchase if stored at -80°C without repeated freeze/thaws.

Product images:

4x Image



20x Image