

Product datasheet for **CS645087**

Frozen Tissue Sections, Smooth muscle

Product data:

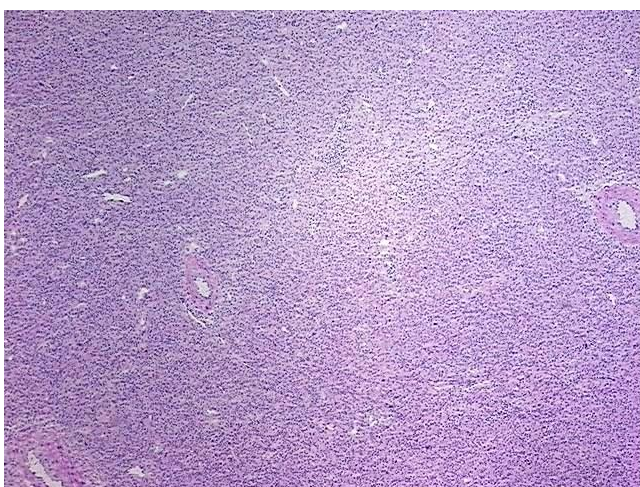
Product Type:	Frozen Sections
Disease State:	Cancer
Diagnosis Category:	Sarcoma
Tissue:	Smooth muscle
Frozen Sample ID:	FR5B342C42
Case ID:	CU0000014127
Tissue of Origin:	Smooth muscle
Site of Finding:	Thigh
Appearance:	Tumor
Sample Diagnosis (from Pathology Verification):	Leiomyosarcoma
Normal:	0%
Lesional:	0%
Tumor:	95%
Tumor Hypo/Acellular Stroma:	5%
Tumor Hypercellular Stroma:	0%
Necrosis:	0%
Pathology Verification notes from H&E review:	Tumor Stroma (Hypo/Acellular): Fibrosis; Inflammation: Mild Mixed inflammatory infiltrate; Other Features/Comments: Sarcoma with myoid features
CASE Diagnosis (from medical center path report):	Leiomyosarcoma
Age:	35
Gender:	Male
Tumor Grade:	AJCC G3: Poorly differentiated



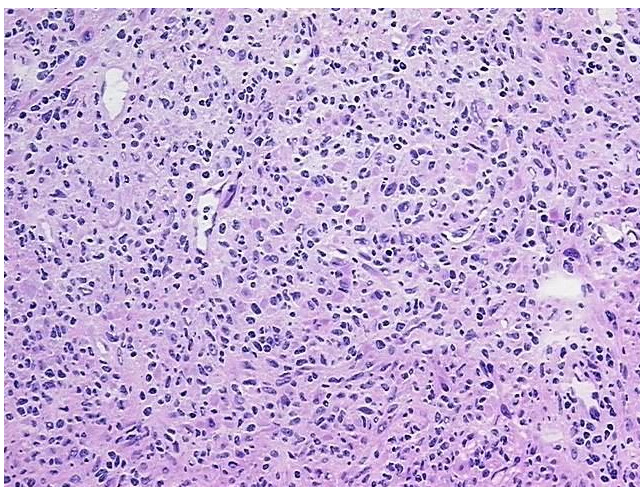
[View online »](#)

Minimum Stage Grouping:	III
T (Extent of Primary Tumor):	pT2b
N (Lymph node metastasis):	pNX
M (Distant metastasis):	pMX
Storage:	Store frozen tissue sections at -80°C.
Stability:	All frozen tissue sections are stable for 1 year from date of purchase if stored at -80°C without repeated freeze/thaws.

Product images:



4x Image



20x Image