

Product datasheet for **CS644918**

Frozen Tissue Sections, Carotid body

Product data:

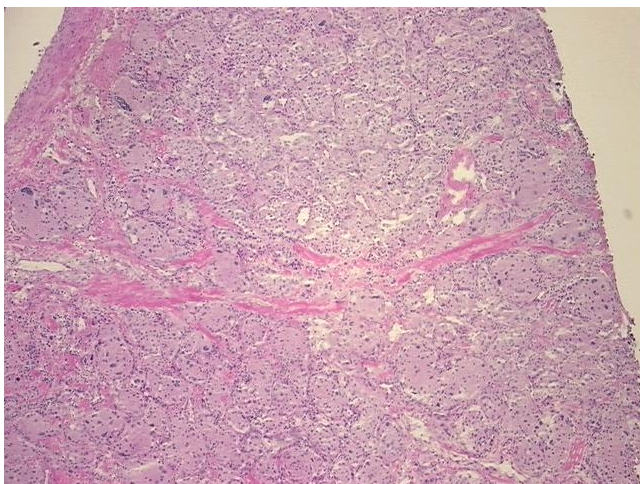
Product Type:	Frozen Sections
Disease State:	Cancer
Diagnosis Category:	Carcinoid/Neuroendocrine Tumors
Tissue:	Artery
Frozen Sample ID:	FR0003E2C9
Case ID:	CU0000014106
Tissue of Origin:	Carotid body
Site of Finding:	Carotid body
Appearance:	T
Sample Diagnosis (from Pathology Verification):	Paraganglioma of carotid body
Normal:	5%
Lesional:	0%
Tumor:	90%
Tumor Hypo/Acellular Stroma:	5%
Tumor Hypercellular Stroma:	0%
Necrosis:	0%
CASE Diagnosis (from medical center path report):	Paraganglioma of carotid body
Age:	19
Gender:	Male
Tumor Grade:	Not Reported
Minimum Stage Grouping:	Not Reported



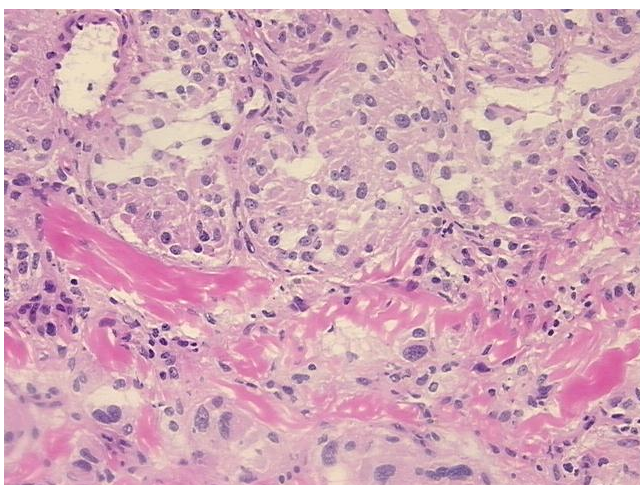
[View online »](#)

T (Extent of Primary Tumor):	Not Reported
N (Lymph node metastasis):	Not Reported
M (Distant metastasis):	Not Reported
Diagnostic Test Results:	Cytokeratin (Pan) ~ Keratin, Pan ! by IHC,Positive; Neuron specific enolase ~ NSE ! by IHC,Positive; S100 protein,Positive in scattered cells; Synaptophysin ~ SYN ! by IHC,Positive; Chromogranin A ~ Parathyroid secretory protein 1 ! by IHC,Positiv
Storage:	Store frozen tissue sections at -80°C.
Stability:	All frozen tissue sections are stable for 1 year from date of purchase if stored at -80°C without repeated freeze/thaws.

Product images:



4x Image



20x Image