

Product datasheet for **CS644899**

Frozen Tissue Sections, Colon: right

Product data:

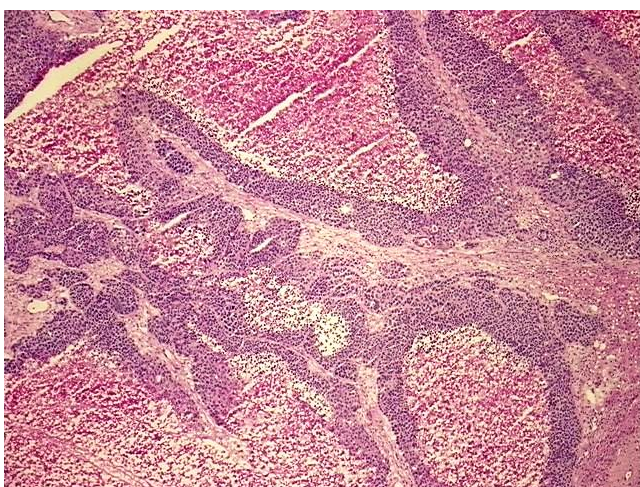
Product Type:	Frozen Sections
Disease State:	Cancer
Diagnosis Category:	Colorectal Cancer
Tissue:	Colon
Frozen Sample ID:	FR65EE0C20
Case ID:	CU0000014105
Tissue of Origin:	Colon: right
Site of Finding:	Liver
Appearance:	Tumor
Sample Diagnosis (from Pathology Verification):	Carcinoma of colon, neuroendocrine, metastatic
Normal:	0%
Lesional:	0%
Tumor:	35%
Tumor Hypo/Acellular Stroma:	20%
Tumor Hypercellular Stroma:	0%
Necrosis:	45%
Pathology Verification notes from H&E review:	Electron microscopy results do not support a neuroendocrine organ for this tumor. This may be due to sampling error.
CASE Diagnosis (from medical center path report):	Carcinoma of colon, neuroendocrine
Age:	63
Gender:	Female
Tumor Grade:	Not Reported



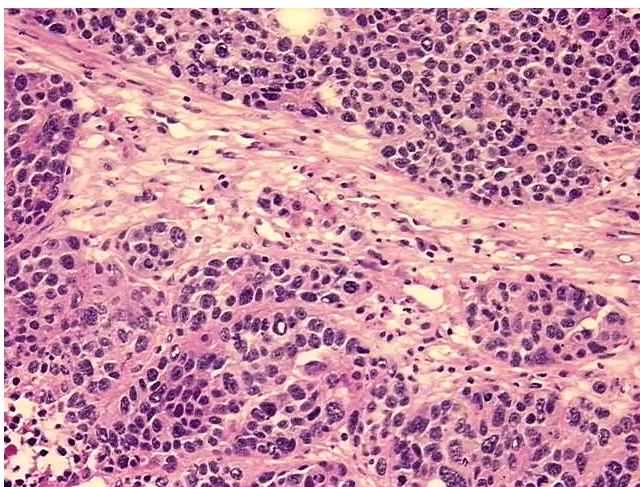
[View online »](#)

Minimum Stage Grouping:	IV
T (Extent of Primary Tumor):	pT4
N (Lymph node metastasis):	pN1
M (Distant metastasis):	pM1
Storage:	Store frozen tissue sections at -80°C.
Stability:	All frozen tissue sections are stable for 1 year from date of purchase if stored at -80°C without repeated freeze/thaws.

Product images:



4x Image



20x Image