

Product datasheet for **CS644874**

Frozen Tissue Sections, Colon: sigmoid

Product data:

Product Type:	Frozen Sections
Disease State:	Cancer
Diagnosis Category:	Colorectal Cancer
Tissue:	Colon
Frozen Sample ID:	FR0003E2B8
Case ID:	CU0000014105
Tissue of Origin:	Colon: sigmoid
Site of Finding:	Colon: sigmoid
Appearance:	T
Sample Diagnosis (from Pathology Verification):	Carcinoma of colon, neuroendocrine
Normal:	0%
Lesional:	0%
Tumor:	60%
Tumor Hypo/Acellular Stroma:	10%
Tumor Hypercellular Stroma:	10%
Necrosis:	20%
CASE Diagnosis (from medical center path report):	Carcinoma of colon, neuroendocrine
Age:	63
Gender:	Female
Tumor Grade:	Not Reported
Minimum Stage Grouping:	IV



[View online »](#)

T (Extent of Primary Tumor): T4

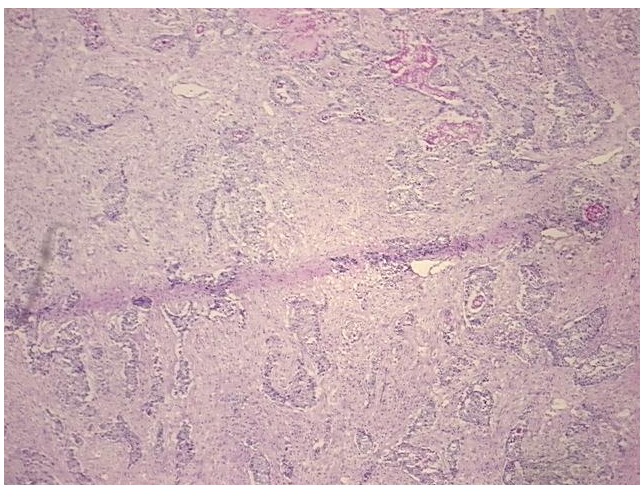
N (Lymph node metastasis): N1

M (Distant metastasis): M1

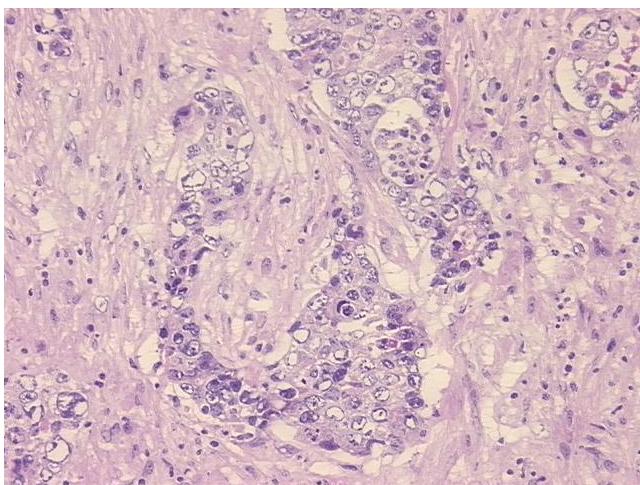
Storage: Store frozen tissue sections at -80°C.

Stability: All frozen tissue sections are stable for 1 year from date of purchase if stored at -80°C without repeated freeze/thaws.

Product images:



4x Image



20x Image