

Product datasheet for **CS644157**

Frozen Tissue Sections, Colon: left

Product data:

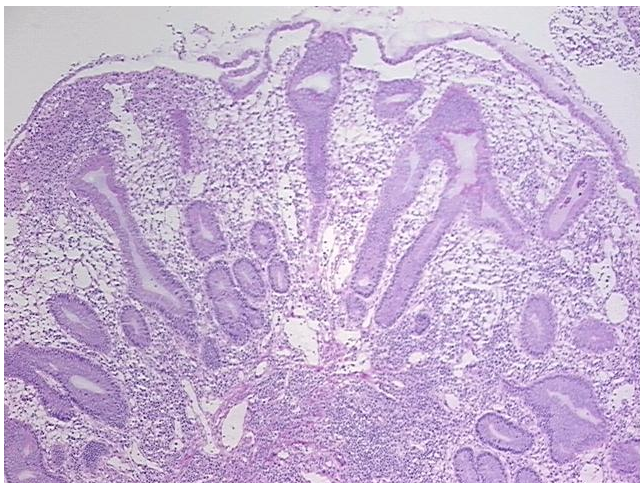
Product Type:	Frozen Sections
Disease State:	Other Disease
Diagnosis Category:	Inflammatory Bowel Disease (IBD)
Tissue:	Colon
Frozen Sample ID:	FR5B339C69
Case ID:	CU0000014005
Tissue of Origin:	Colon: left
Site of Finding:	Colon: left
Appearance:	L
Sample Diagnosis (from Pathology Verification):	Colitis, ulcerative, chronic active
Normal:	0%
Lesional:	100%
Tumor:	0%
Tumor Hypo/Acellular Stroma:	0%
Tumor Hypercellular Stroma:	0%
Necrosis:	0%
Pathology Verification notes from H&E review:	Inflammation: Severe Mixed inflammatory infiltrate; Non Tumor Structures: 50% Mucosa, 10% Submucosa, 40% Muscle
CASE Diagnosis (from medical center path report):	Colitis, ulcerative, chronic active
Age:	55
Gender:	Female
Storage:	Store frozen tissue sections at -80°C.



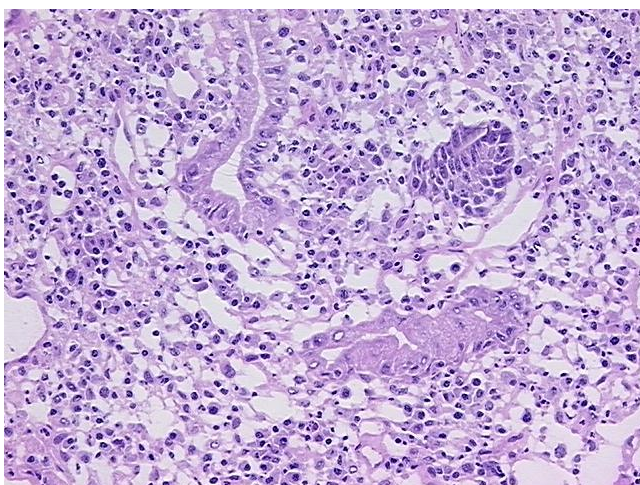
[View online »](#)

Stability: All frozen tissue sections are stable for 1 year from date of purchase if stored at -80°C without repeated freeze/thaws.

Product images:



4x Image



20x Image