

## Product datasheet for **CS643983**

### Frozen Tissue Sections, Stomach

#### Product data:

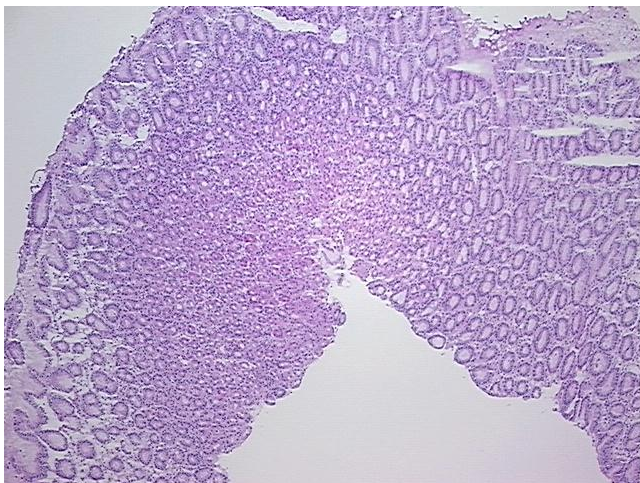
Product Type:	Frozen Sections
Disease State:	Other Disease
Diagnosis Category:	Gastritis
Tissue:	Stomach
Frozen Sample ID:	FR000346D5
Case ID:	CU0000013987
Tissue of Origin:	Stomach
Site of Finding:	Stomach
Appearance:	L
Sample Diagnosis (from Pathology Verification):	Gastritis, chronic
Normal:	0%
Lesional:	100%
Tumor:	0%
Tumor Hypo/Acellular Stroma:	0%
Tumor Hypercellular Stroma:	0%
Necrosis:	0%
Pathology Verification notes from H&E review:	Inflammation: Mild Lymphoplasmacytic infiltrate; Non Tumor Structures: 45% Mucosa, 10% Submucosa, 45% Muscle; Other Features/Comments: Mild chronic gastritis
CASE Diagnosis (from medical center path report):	Gastritis, chronic
Age:	22
Gender:	Female
Storage:	Store frozen tissue sections at -80°C.



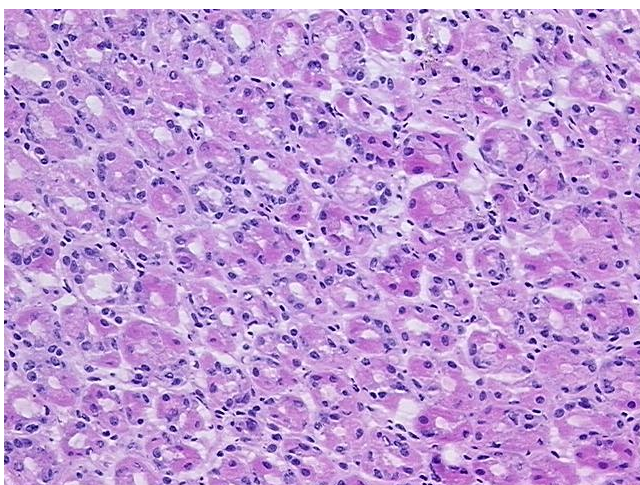
[View online »](#)

**Stability:** All frozen tissue sections are stable for 1 year from date of purchase if stored at -80°C without repeated freeze/thaws.

**Product images:**



4x Image



20x Image