

Product datasheet for CS643935

Frozen Tissue Sections, Brain

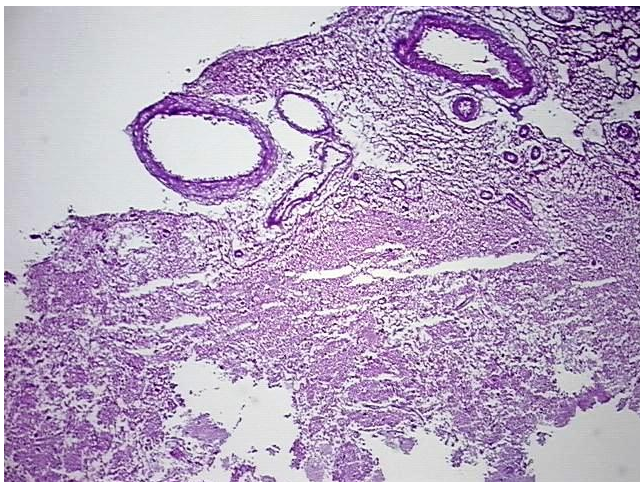
Product data:

Product Type:	Frozen Sections
Disease State:	Other Disease
Diagnosis Category:	Vascular Malformation
Tissue:	Brain
Frozen Sample ID:	FR00034496
Case ID:	CU0000013973
Tissue of Origin:	Brain
Site of Finding:	Brain
Appearance:	Lesion
Sample Diagnosis (from Pathology Verification):	Vascular malformation of brain
Normal:	10%
Lesional:	90%
Tumor:	0%
Tumor Hypo/Acellular Stroma:	0%
Tumor Hypercellular Stroma:	0%
Necrosis:	0%
Pathology Verification notes from H&E review:	The specimen shows an aggregate of abnormal ectatic vascular channels within brain parenchyma. The lesion is surrounded by extensive organizing hemorrhage with hemosiderin, hematoidin, reactive fibroblastic proliferation and reactive inflammatory infiltrates
CASE Diagnosis (from medical center path report):	Vascular malformation of brain
Age:	46

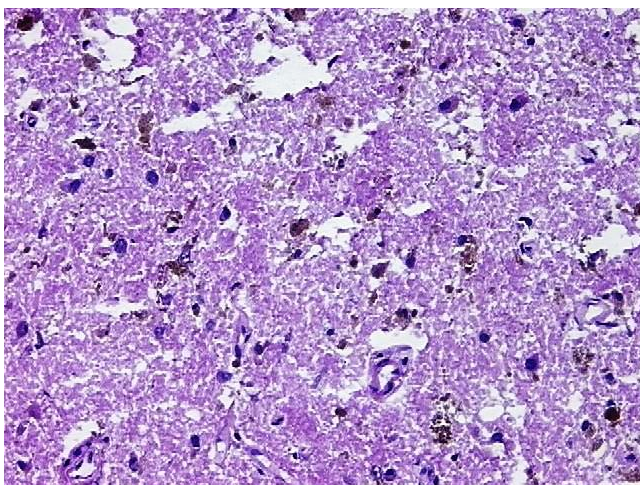


[View online »](#)

Gender:	Male
Tumor Grade:	n/a
Minimum Stage Grouping:	n/a
Storage:	Store frozen tissue sections at -80°C.
Stability:	All frozen tissue sections are stable for 1 year from date of purchase if stored at -80°C without repeated freeze/thaws.

Product images:

4x Image



20x Image