

Product datasheet for **CS643932**

Frozen Tissue Sections, Jejunum

Product data:

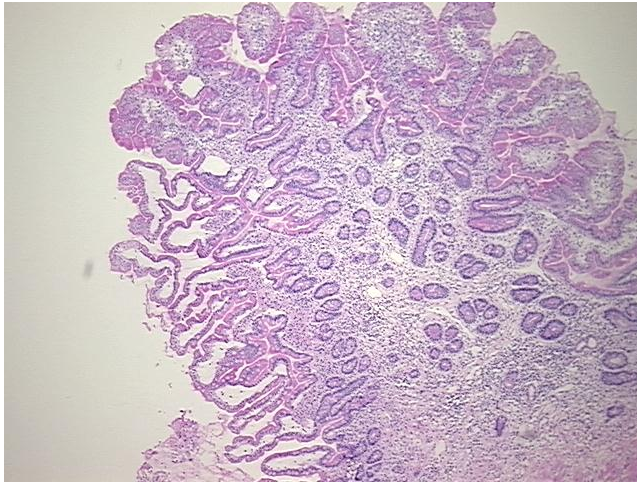
Product Type:	Frozen Sections
Disease State:	Other Disease
Diagnosis Category:	Inflammatory Bowel Disease (IBD)
Tissue:	Small intestine
Frozen Sample ID:	FR00034463
Case ID:	CU0000013971
Tissue of Origin:	Jejunum
Site of Finding:	Jejunum
Appearance:	L
Sample Diagnosis (from Pathology Verification):	Crohns disease
Normal:	0%
Lesional:	100%
Tumor:	0%
Tumor Hypo/Acellular Stroma:	0%
Tumor Hypercellular Stroma:	0%
Necrosis:	0%
Pathology Verification notes from H&E review:	Inflammation: Moderate Mixed inflammatory infiltrate; Non Tumor Structures: 50% Mucosa, 10% Submucosa, 40% Muscle
CASE Diagnosis (from medical center path report):	Crohns disease
Age:	29
Gender:	Female
Storage:	Store frozen tissue sections at -80°C.



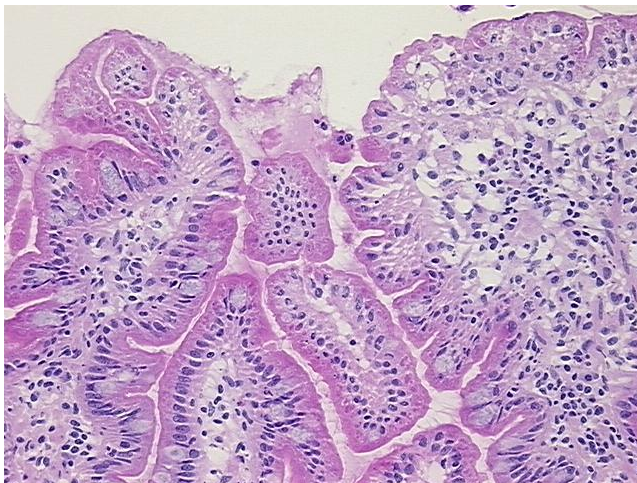
[View online »](#)

Stability: All frozen tissue sections are stable for 1 year from date of purchase if stored at -80°C without repeated freeze/thaws.

Product images:



4x Image



20x Image