

## Product datasheet for **CS643557**

### Frozen Tissue Sections, Lung

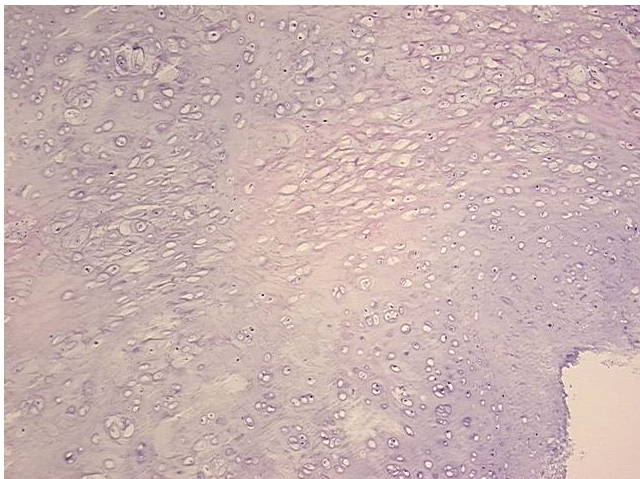
#### Product data:

Product Type:	Frozen Sections
Disease State:	Other Disease
Diagnosis Category:	Benign Tumors
Tissue:	Lung
Frozen Sample ID:	FR00036C33
Case ID:	CU0000012838
Tissue of Origin:	Lung
Site of Finding:	Lung
Appearance:	T
Sample Diagnosis (from Pathology Verification):	Hamartoma of lung
Normal:	0%
Lesional:	0%
Tumor:	100%
Tumor Hypo/Acellular Stroma:	0%
Tumor Hypercellular Stroma:	0%
Necrosis:	0%
CASE Diagnosis (from medical center path report):	Hamartoma of lung
Age:	53
Gender:	Female
Storage:	Store frozen tissue sections at -80°C.
Stability:	All frozen tissue sections are stable for 1 year from date of purchase if stored at -80°C without repeated freeze/thaws.

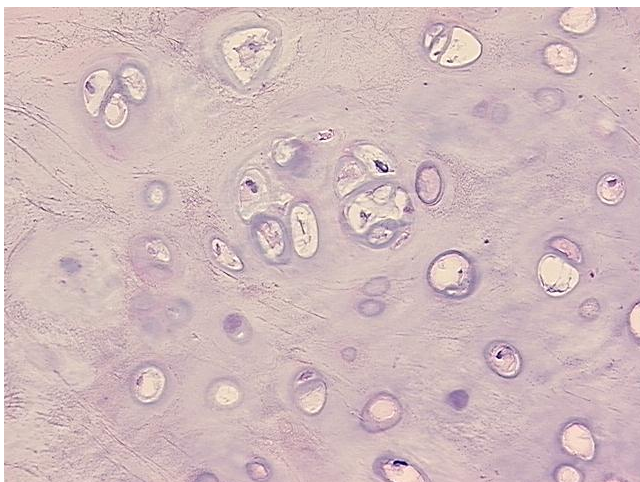


[View online »](#)

Product images:



4x Image



20x Image