

## Product datasheet for **CS643548**

### Frozen Tissue Sections, Breast

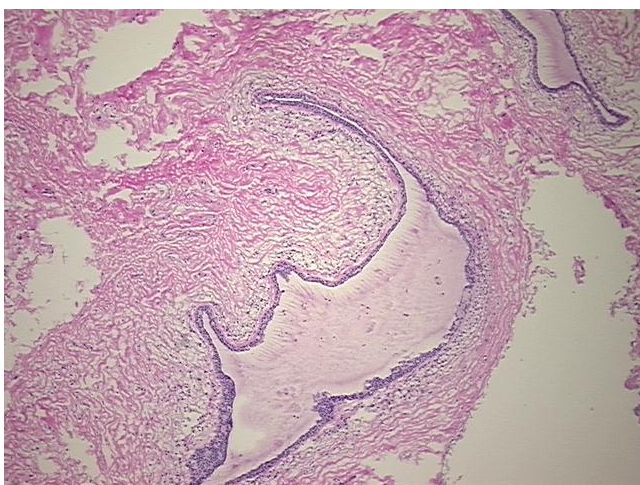
#### Product data:

Product Type:	Frozen Sections
Disease State:	Other Disease
Diagnosis Category:	Fibrocystic Breast
Tissue:	Breast
Frozen Sample ID:	FR00036BF5
Case ID:	CU0000012837
Tissue of Origin:	Breast
Site of Finding:	Breast
Appearance:	L
Sample Diagnosis (from Pathology Verification):	Fibrocystic changes to breast
Normal:	90%
Lesional:	10%
Tumor:	0%
Tumor Hypo/Acellular Stroma:	0%
Tumor Hypercellular Stroma:	0%
Necrosis:	0%
Pathology Verification notes from H&E review:	Non Tumor Structures: 5% Glandular epithelium, 75% Stroma, 20% Adipose tissue
CASE Diagnosis (from medical center path report):	Adenocarcinoma of breast, ductal
Age:	78
Gender:	Female
Tumor Grade:	Nottingham G1: 3-5 points Low combined grade (favorable)

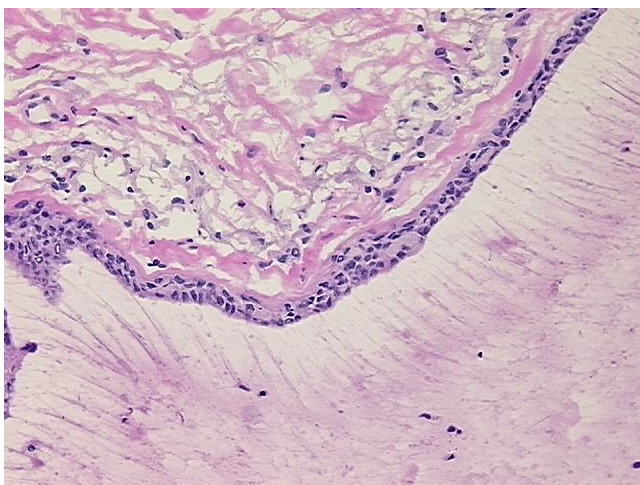


[View online »](#)

Minimum Stage Grouping:	I
T (Extent of Primary Tumor):	T1c
N (Lymph node metastasis):	N0 (i-)
M (Distant metastasis):	MX
Diagnostic Test Results:	E-Cadherin ~ Uvomorulin ~ Cadherin-E ! by IHC,Positive; Cytokeratin (Pan) ~ Keratin, Pan ! by IHC,Negative
Storage:	Store frozen tissue sections at -80°C.
Stability:	All frozen tissue sections are stable for 1 year from date of purchase if stored at -80°C without repeated freeze/thaws.

**Product images:**

4x Image



20x Image