

Product datasheet for CS643072

Frozen Tissue Sections, Skin

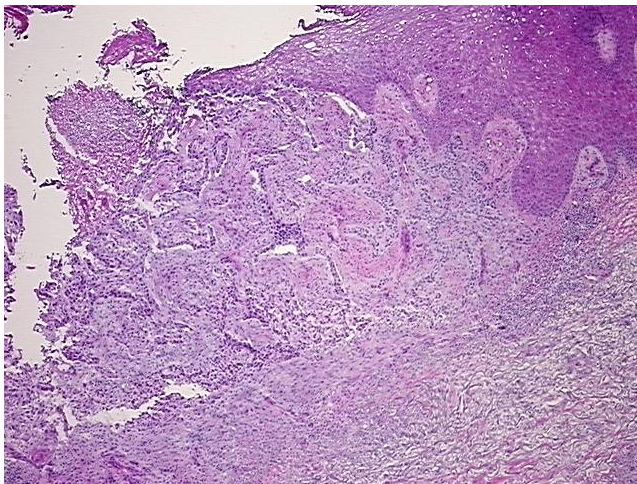
Product data:

Product Type:	Frozen Sections
Disease State:	Cancer
Diagnosis Category:	Skin Cancer
Tissue:	Skin
Frozen Sample ID:	FR00034DA7
Case ID:	CU0000012811
Tissue of Origin:	Skin
Site of Finding:	Skin
Appearance:	T
Sample Diagnosis (from Pathology Verification):	Carcinoma of skin, basal cell
Normal:	75%
Lesional:	0%
Tumor:	10%
Tumor Hypo/Acellular Stroma:	0%
Tumor Hypercellular Stroma:	10%
Necrosis:	5%
Pathology Verification notes from H&E review:	Tumor Stroma (Cellular): Desmoplastic reaction; Non Tumor Structures: 35% Epidermis, 55% Dermis, 10% Subcutaneous tissue
CASE Diagnosis (from medical center path report):	Carcinoma of skin, basal cell
Age:	83
Gender:	Female
Tumor Grade:	Not Reported

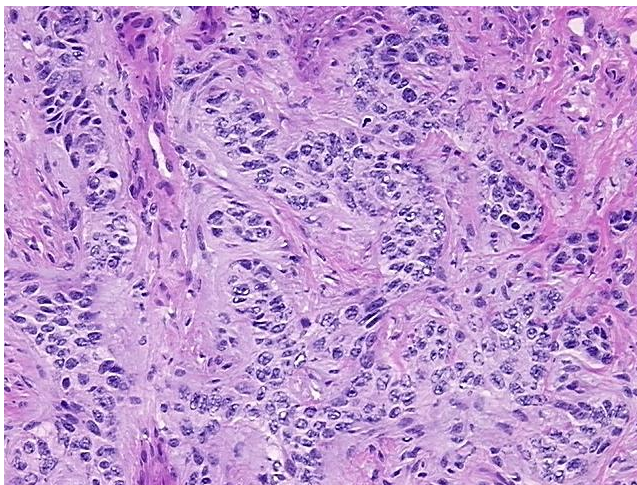


[View online »](#)

Minimum Stage Grouping:	I
T (Extent of Primary Tumor):	T1
N (Lymph node metastasis):	NX
M (Distant metastasis):	MX
Storage:	Store frozen tissue sections at -80°C.
Stability:	All frozen tissue sections are stable for 1 year from date of purchase if stored at -80°C without repeated freeze/thaws.

Product images:

4x Image



20x Image