

Product datasheet for **CS643007**

Frozen Tissue Sections, Colon: rectosigmoid

Product data:

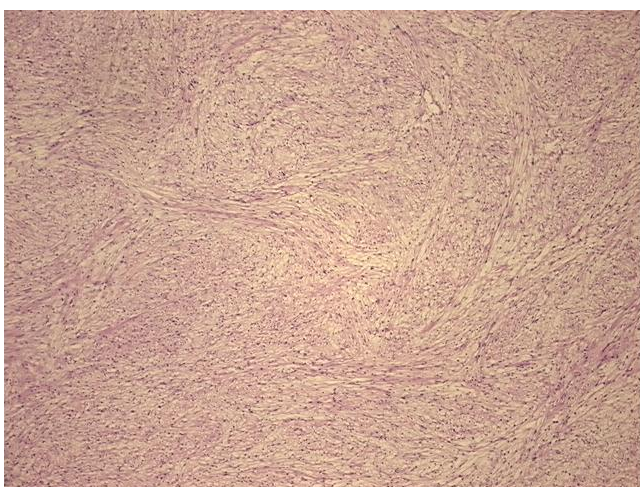
Product Type:	Frozen Sections
Disease State:	Other Disease
Diagnosis Category:	Gastrointestinal Stromal Tumor (GIST)
Tissue:	Colon
Frozen Sample ID:	FR00034E6D
Case ID:	CU0000012808
Tissue of Origin:	Colon: rectosigmoid
Site of Finding:	Colon: rectosigmoid
Appearance:	T
Sample Diagnosis (from Pathology Verification):	Gastrointestinal stromal tumor of colon
Normal:	0%
Lesional:	0%
Tumor:	98%
Tumor Hypo/Acellular Stroma:	2%
Tumor Hypercellular Stroma:	0%
Necrosis:	0%
CASE Diagnosis (from medical center path report):	Gastrointestinal stromal tumor of colon
Age:	38
Gender:	Male
Tumor Grade:	Not Reported
Minimum Stage Grouping:	Not Reported



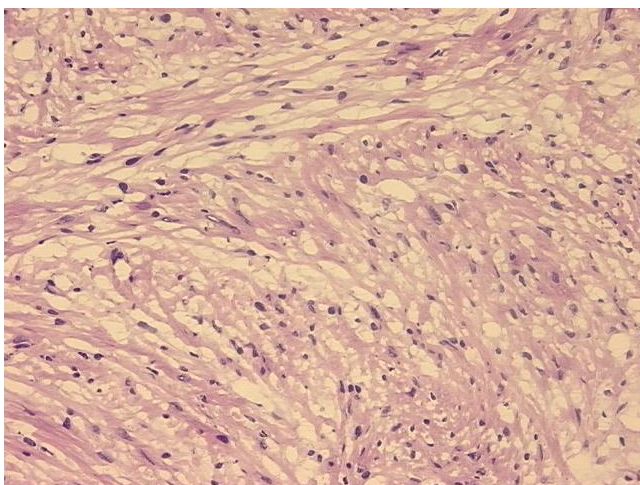
[View online »](#)

T (Extent of Primary Tumor):	Not Reported
N (Lymph node metastasis):	Not Reported
M (Distant metastasis):	Not Reported
Diagnostic Test Results:	S100 protein,Positive; Desmin ! by IHC,Negative; CD34 ~ HPCA ! by IHC,Positive; MSA ~ Muscle Specific Actin,Negative; CD117 ~ C-kit ~ SCFR ! by IHC,Negative
Storage:	Store frozen tissue sections at -80°C.
Stability:	All frozen tissue sections are stable for 1 year from date of purchase if stored at -80°C without repeated freeze/thaws.

Product images:



4x Image



20x Image