

## Product datasheet for **CS642980**

### Frozen Tissue Sections, Ovary

#### Product data:

|   |   |
|---|---|
| Product Type:                                     | Frozen Sections                                       |
| Disease State:                                    | Cancer  |
| Diagnosis Category:                               | Ovarian Cancer  |
| Tissue:   | Ovary   |
| Frozen Sample ID:                                 | FR76046933  |
| Case ID:  | CU0000012806  |
| Tissue of Origin:                                 | Ovary   |
| Site of Finding:                                  | Lymph node  |
| Appearance:                                       | Tumor   |
| Sample Diagnosis (from Pathology Verification):   | Adenocarcinoma of ovary, papillary serous, metastatic |
| Normal:   | 0%  |
| Lesional:   | 0%  |
| Tumor:  | 75%   |
| Tumor Hypo/Acellular Stroma:                      | 10%   |
| Tumor Hypercellular Stroma:                       | 0%  |
| Necrosis:   | 15%   |
| CASE Diagnosis (from medical center path report): | Adenocarcinoma of ovary, papillary serous             |
| Age:  | 79  |
| Gender:   | Female  |
| Tumor Grade:                                      | FIGO G3: Poorly differentiated                        |
| Minimum Stage Grouping:                           | IV  |



[View online »](#)

T (Extent of Primary Tumor): pT3b

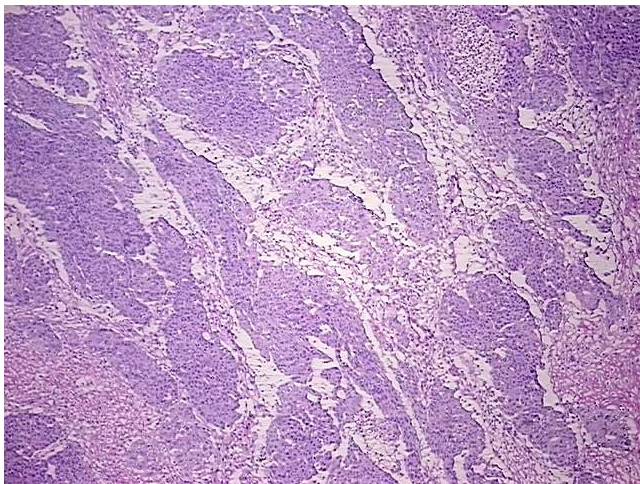
N (Lymph node metastasis): pN1

M (Distant metastasis): pM1

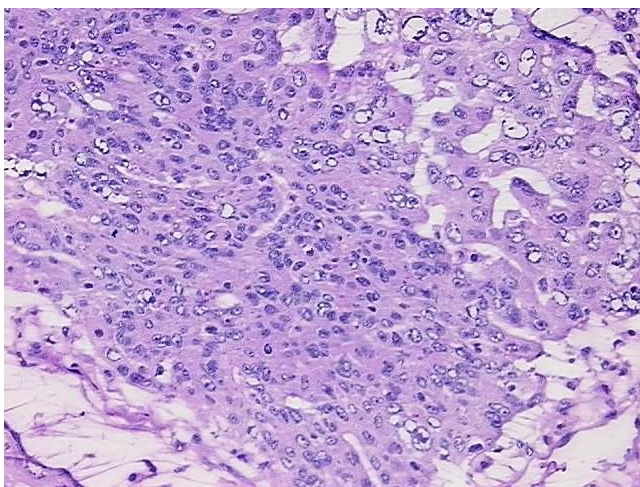
Storage: Store frozen tissue sections at -80°C.

Stability: All frozen tissue sections are stable for 1 year from date of purchase if stored at -80°C without repeated freeze/thaws.

### Product images:



4x Image



20x Image