

Product datasheet for **CS642584**

Frozen Tissue Sections, Liver

Product data:

Product Type:	Frozen Sections
Disease State:	Other Disease
Diagnosis Category:	Cirrhosis
Tissue:	Liver
Frozen Sample ID:	FR000325F7
Case ID:	CU0000012621
Tissue of Origin:	Liver
Site of Finding:	Liver
Appearance:	L
Sample Diagnosis (from Pathology Verification):	Cirrhosis of liver
Normal:	0%
Lesional:	100%
Tumor:	0%
Tumor Hypo/Acellular Stroma:	0%
Tumor Hypercellular Stroma:	0%
Necrosis:	0%
Pathology Verification notes from H&E review:	Inflammation: Mild Lymphoplasmacytic infiltrate; Non Tumor Structures: 90% Lobules, 10% Triads
CASE Diagnosis (from medical center path report):	Cirrhosis of liver
Age:	49
Gender:	Female



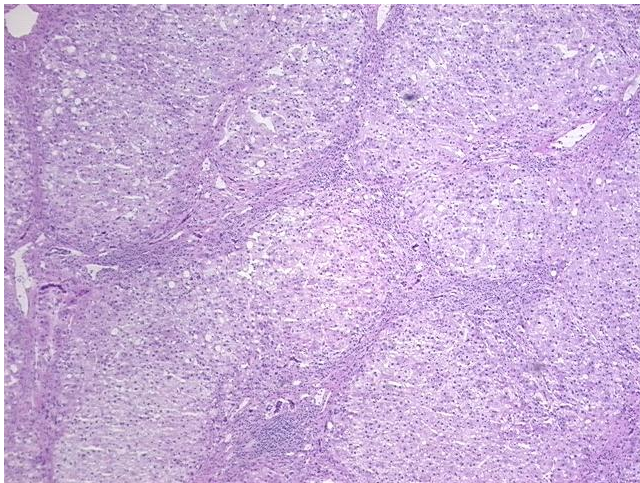
[View online »](#)

Diagnostic Test Results: PAS ~ Periodic acid-Schiff stain, Negative; Trichrome - Masson stain, modified, Cirrhosis; Reticulin stain, Cirrhosis; Iron stain, Perls ~ Iron stain, Prussian blue, Negative

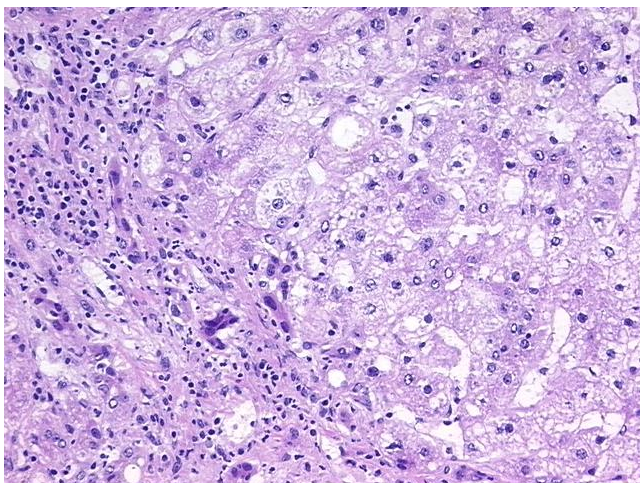
Storage: Store frozen tissue sections at -80°C.

Stability: All frozen tissue sections are stable for 1 year from date of purchase if stored at -80°C without repeated freeze/thaws.

Product images:



4x Image



20x Image