

Product datasheet for **CS642408**

Frozen Tissue Sections, Colon: left

Product data:

Product Type:	Frozen Sections
Disease State:	Cancer
Diagnosis Category:	Colorectal Cancer
Tissue:	Colon
Frozen Sample ID:	FR00032085
Case ID:	CU0000012599
Tissue of Origin:	Colon: left
Site of Finding:	Colon: left
Appearance:	T
Sample Diagnosis (from Pathology Verification):	Adenocarcinoma of colon
Normal:	50%
Lesional:	0%
Tumor:	40%
Tumor Hypo/Acellular Stroma:	0%
Tumor Hypercellular Stroma:	10%
Necrosis:	0%
Pathology Verification notes from H&E review:	Tumor Stroma (Cellular): Desmoplastic reaction; Non Tumor Structures: 100% Muscle
CASE Diagnosis (from medical center path report):	Adenocarcinoma of colon
Age:	68
Gender:	Male
Tumor Grade:	AJCC G2: Moderately differentiated


[View online »](#)

Minimum Stage Grouping: IIIB

T (Extent of Primary Tumor): T4

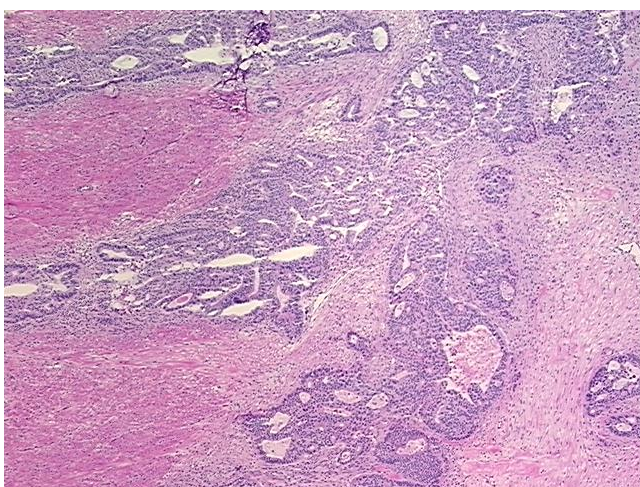
N (Lymph node metastasis): N1

M (Distant metastasis): MX

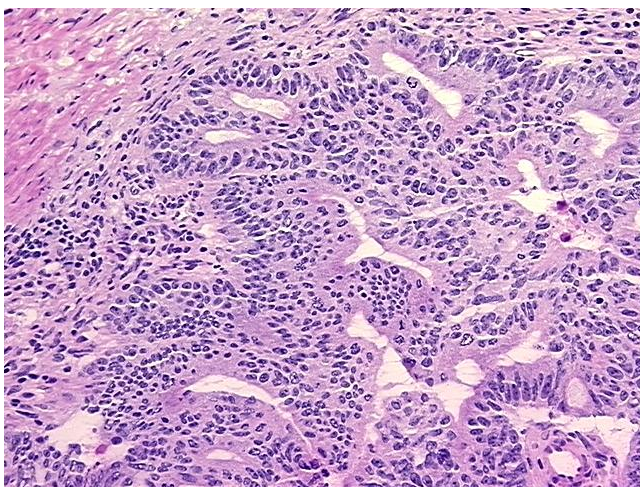
Storage: Store frozen tissue sections at -80°C.

Stability: All frozen tissue sections are stable for 1 year from date of purchase if stored at -80°C without repeated freeze/thaws.

Product images:



4x Image



20x Image