

## Product datasheet for **CS642161**

### Frozen Tissue Sections, Bone

#### Product data:

Product Type:	Frozen Sections
Disease State:	Other Disease
Diagnosis Category:	Osteochondroma
Tissue:	Bone
Frozen Sample ID:	FR00031A5E
Case ID:	CU0000012558
Tissue of Origin:	Bone
Site of Finding:	Bone: iliac crest
Appearance:	L
Sample Diagnosis (from Pathology Verification):	Osteochondroma
Normal:	0%
Lesional:	100%
Tumor:	0%
Tumor Hypo/Acellular Stroma:	0%
Tumor Hypercellular Stroma:	0%
Necrosis:	0%
CASE Diagnosis (from medical center path report):	Chondrosarcoma
Age:	24
Gender:	Female
Tumor Grade:	AJCC G1: Well differentiated
Minimum Stage Grouping:	I



[View online »](#)

T (Extent of Primary Tumor): T1a

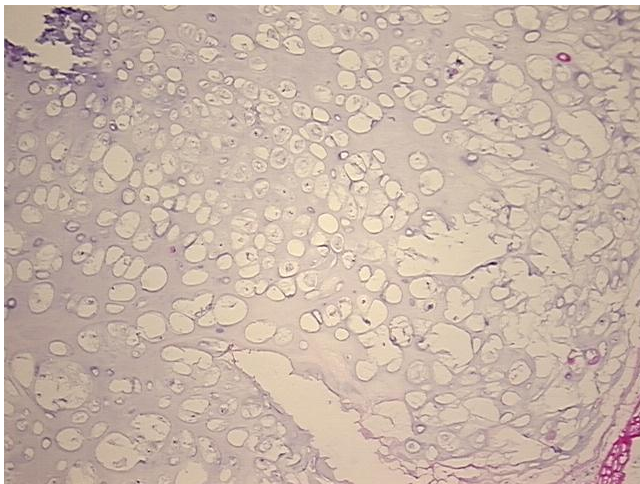
N (Lymph node metastasis): NX

M (Distant metastasis): MX

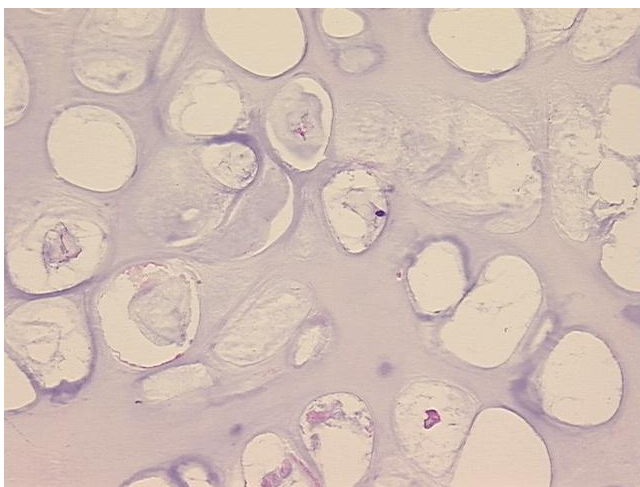
Storage: Store frozen tissue sections at -80°C.

Stability: All frozen tissue sections are stable for 1 year from date of purchase if stored at -80°C without repeated freeze/thaws.

### Product images:



4x Image



20x Image