

Product datasheet for **CS642156**

Frozen Tissue Sections, Cartilage

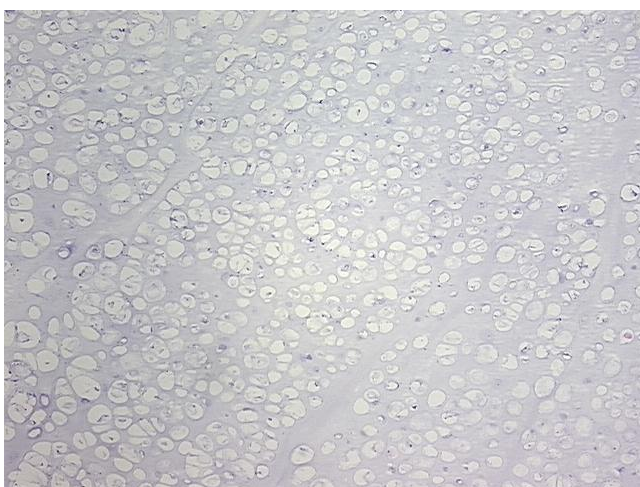
Product data:

| | |
|---|---|
| Product Type: | Frozen Sections |
| Disease State: | Cancer |
| Diagnosis Category: | Sarcoma |
| Tissue: | Cartilage |
| Frozen Sample ID: | FR00031A57 |
| Case ID: | CU0000012558 |
| Tissue of Origin: | Cartilage |
| Site of Finding: | Bone: iliac crest |
| Appearance: | T |
| Sample Diagnosis (from Pathology Verification): | Chondrosarcoma |
| Normal: | 0% |
| Lesional: | 0% |
| Tumor: | 60% |
| Tumor Hypo/Acellular Stroma: | 0% |
| Tumor Hypercellular Stroma: | 40% |
| Necrosis: | 0% |
| Pathology Verification notes from H&E review: | Tumor: secondary (arising in an osteocartilaginous exostosis) |
| CASE Diagnosis (from medical center path report): | Chondrosarcoma |
| Age: | 24 |
| Gender: | Female |
| Tumor Grade: | AJCC G1: Well differentiated |

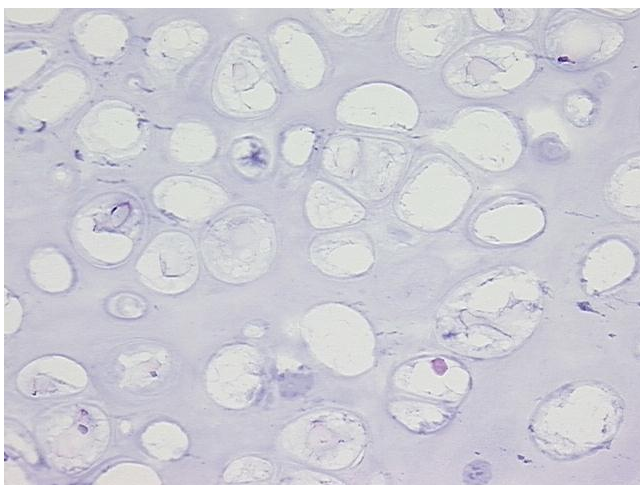


[View online »](#)

| | |
|------------------------------|--|
| Minimum Stage Grouping: | I |
| T (Extent of Primary Tumor): | T1a |
| N (Lymph node metastasis): | NX |
| M (Distant metastasis): | MX |
| Storage: | Store frozen tissue sections at -80°C. |
| Stability: | All frozen tissue sections are stable for 1 year from date of purchase if stored at -80°C without repeated freeze/thaws. |

Product images:

4x Image



20x Image