

Product datasheet for **CS642103**

Frozen Tissue Sections, Colon: right

Product data:

Product Type:	Frozen Sections
Disease State:	Cancer
Diagnosis Category:	Colorectal Cancer
Tissue:	Colon
Frozen Sample ID:	FR000331E1
Case ID:	CU0000012249
Tissue of Origin:	Colon: right
Site of Finding:	Colon: right
Appearance:	T
Sample Diagnosis (from Pathology Verification):	Adenocarcinoma of colon
Normal:	60%
Lesional:	0%
Tumor:	30%
Tumor Hypo/Acellular Stroma:	5%
Tumor Hypercellular Stroma:	5%
Necrosis:	0%
Pathology Verification notes from H&E review:	Non Tumor Structures: 90% Mucosa, 5% Submucosa, 5% Muscle
CASE Diagnosis (from medical center path report):	Adenocarcinoma of colon
Age:	71
Gender:	Male
Tumor Grade:	AJCC G2: Moderately differentiated



[View online »](#)

Minimum Stage Grouping: IIA

T (Extent of Primary Tumor): T3

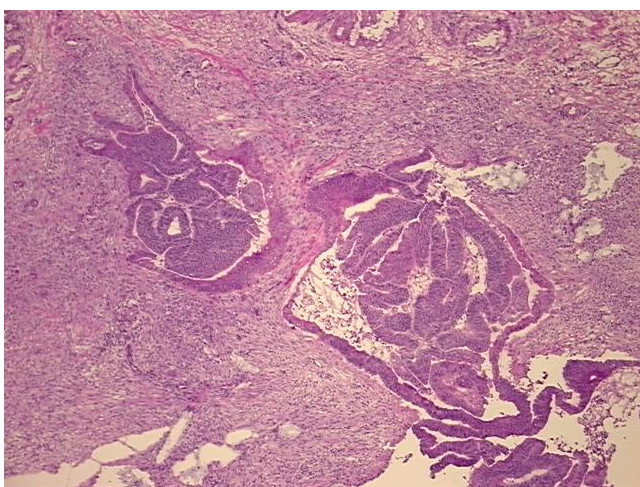
N (Lymph node metastasis): N0

M (Distant metastasis): MX

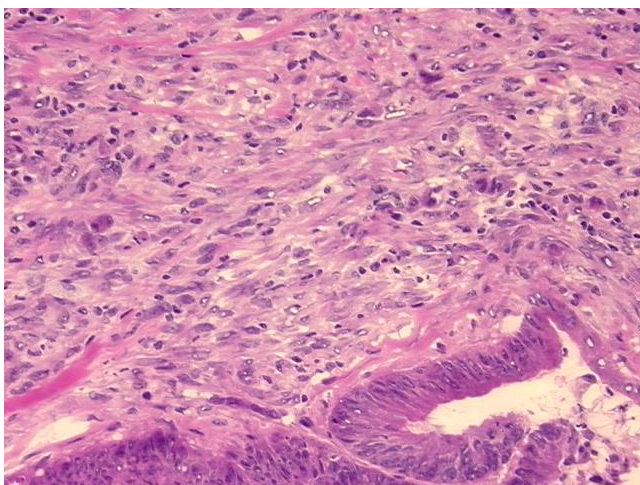
Storage: Store frozen tissue sections at -80°C.

Stability: All frozen tissue sections are stable for 1 year from date of purchase if stored at -80°C without repeated freeze/thaws.

Product images:



4x Image



20x Image