

Product datasheet for CS641969

Frozen Tissue Sections, Testis

Product data:

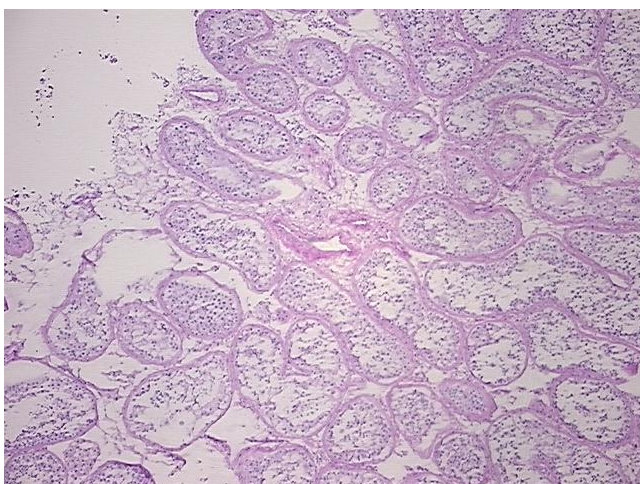
| | |
|---|--|
| Product Type: | Frozen Sections |
| Disease State: | Other Disease |
| Diagnosis Category: | Germ Cell Tumor |
| Tissue: | Testis |
| Frozen Sample ID: | FR00030DA8 |
| Case ID: | CU0000012226 |
| Tissue of Origin: | Testis |
| Site of Finding: | Testis |
| Appearance: | T |
| Sample Diagnosis (from Pathology Verification): | Intratubular germ cell neoplasia of testis |
| Normal: | 40% |
| Lesional: | 0% |
| Tumor: | 60% |
| Tumor Hypo/Acellular Stroma: | 0% |
| Tumor Hypercellular Stroma: | 0% |
| Necrosis: | 0% |
| CASE Diagnosis (from medical center path report): | Tumor of testis, mixed germ cell |
| Age: | 37 |
| Gender: | Male |
| Tumor Grade: | Not Reported |
| Minimum Stage Grouping: | I |



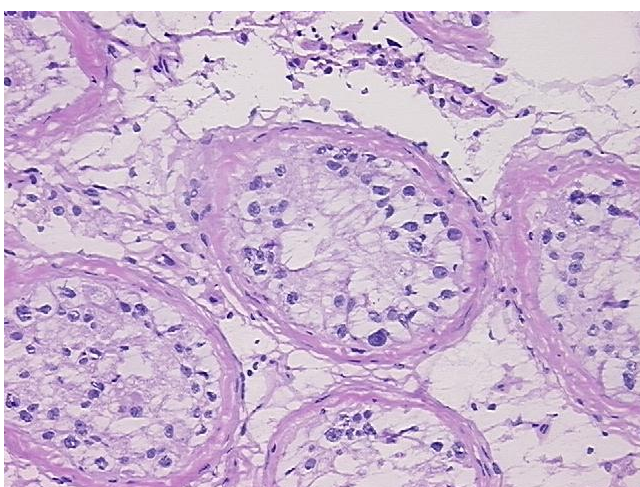
[View online »](#)

| | |
|------------------------------|--|
| T (Extent of Primary Tumor): | T1 |
| N (Lymph node metastasis): | NX |
| M (Distant metastasis): | MX |
| Diagnostic Test Results: | Neurofilament,Negative; Neuron specific enolase ~ NSE ! by IHC,Negative; S100 protein,Positive; Synaptophysin ~ SYN ! by IHC,Negative; Human chorionic gonadotropin ~ HCG ! by IHC,Positive; Chromogranin A ~ Parathyroid secretory protein 1 ! by IHC |
| Storage: | Store frozen tissue sections at -80°C. |
| Stability: | All frozen tissue sections are stable for 1 year from date of purchase if stored at -80°C without repeated freeze/thaws. |

Product images:



4x Image



20x Image