

Product datasheet for **CS641367**

Frozen Tissue Sections, Liver

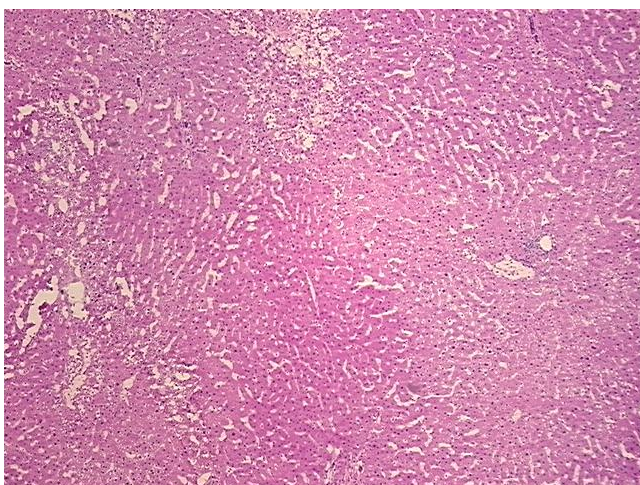
Product data:

Product Type:	Frozen Sections
Disease State:	Other Disease
Diagnosis Category:	Hyperplasia
Tissue:	Liver
Frozen Sample ID:	FR65EDFB76
Case ID:	CU0000012132
Tissue of Origin:	Liver
Site of Finding:	Liver
Appearance:	L
Sample Diagnosis (from Pathology Verification):	Nodular hyperplasia of liver, focal
Normal:	0%
Lesional:	100%
Tumor:	0%
Tumor Hypo/Acellular Stroma:	0%
Tumor Hypercellular Stroma:	0%
Necrosis:	0%
Pathology Verification notes from H&E review:	Inflammation: Mild Lymphoid infiltrate; Non Tumor Structures: 95% Lobules, 5% Triads
CASE Diagnosis (from medical center path report):	Carcinoma of liver, hepatocellular
Age:	66
Gender:	Male
Tumor Grade:	AJCC G3: Poorly differentiated

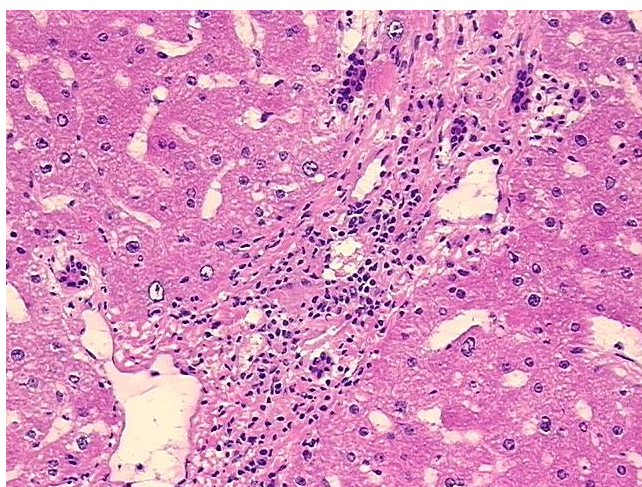


[View online »](#)

Minimum Stage Grouping:	I
T (Extent of Primary Tumor):	T1
N (Lymph node metastasis):	N0
M (Distant metastasis):	MX
Diagnostic Test Results:	Synaptophysin ~ SYN ! by IHC,Negative; Cytokeratin 7 ~ CK7 ! by IHC,Negative; Cytokeratin 20 ~ CK20 ! by IHC,Positive; Cytokeratin CAM5.2 ~ CAM5.2 ! by IHC,Positive; Chromogranin A ~ Parathyroid secretory protein 1 ! by IHC,Negative; CD66e ~ C
Storage:	Store frozen tissue sections at -80°C.
Stability:	All frozen tissue sections are stable for 1 year from date of purchase if stored at -80°C without repeated freeze/thaws.

Product images:

4x Image



20x Image