

## Product datasheet for CS641187

### Frozen Tissue Sections, Ovary: left

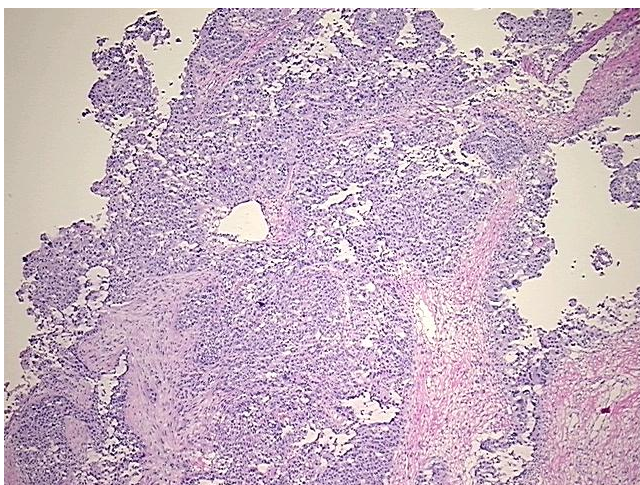
#### Product data:

|   |                                     |
|---|-------------------------------------|
| Product Type:                                     | Frozen Sections                     |
| Disease State:                                    | Cancer                              |
| Diagnosis Category:                               | Ovarian Cancer                      |
| Tissue:   | Ovary                               |
| Frozen Sample ID:                                 | FR00033EF6                          |
| Case ID:  | CU0000012121                        |
| Tissue of Origin:                                 | Ovary: left                         |
| Site of Finding:                                  | Ovary: left                         |
| Appearance:                                       | T                                   |
| Sample Diagnosis (from Pathology Verification):   | Adenocarcinoma of ovary, clear cell |
| Normal:   | 0%                                  |
| Lesional:   | 0%                                  |
| Tumor:  | 60%                                 |
| Tumor Hypo/Acellular Stroma:                      | 0%                                  |
| Tumor Hypercellular Stroma:                       | 40%                                 |
| Necrosis:   | 0%                                  |
| CASE Diagnosis (from medical center path report): | Adenocarcinoma of ovary, clear cell |
| Age:  | 54                                  |
| Gender:   | Female                              |
| Tumor Grade:                                      | FIGO G3: Poorly differentiated      |
| Minimum Stage Grouping:                           | IIIC                                |

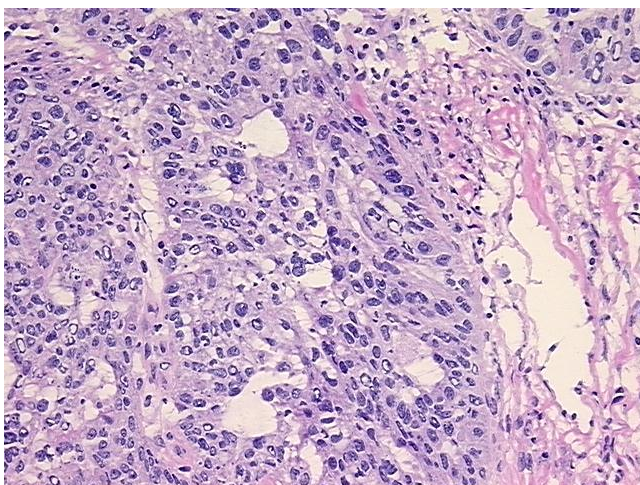


[View online »](#)

|                              |  |
|------------------------------|--|
| T (Extent of Primary Tumor): | T3c  |
| N (Lymph node metastasis):   | NX   |
| M (Distant metastasis):      | MX   |
| Storage:                     | Store frozen tissue sections at -80°C.   |
| Stability:                   | All frozen tissue sections are stable for 1 year from date of purchase if stored at -80°C without repeated freeze/thaws. |

**Product images:**

4x Image



20x Image