

Product datasheet for CS640921

Frozen Tissue Sections, Stomach

Product data:

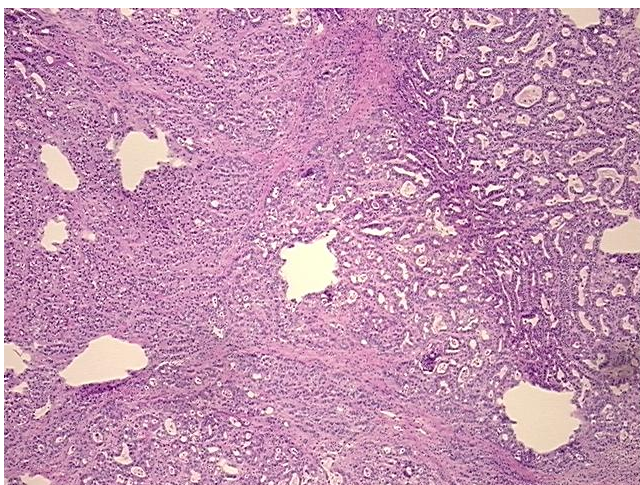
| | |
|---|---|
| Product Type: | Frozen Sections |
| Disease State: | Cancer |
| Diagnosis Category: | Stomach Cancer |
| Tissue: | Stomach |
| Frozen Sample ID: | FR000338A5 |
| Case ID: | CU0000012088 |
| Tissue of Origin: | Stomach |
| Site of Finding: | Stomach |
| Appearance: | T |
| Sample Diagnosis (from Pathology Verification): | Adenocarcinoma of stomach |
| Normal: | 50% |
| Lesional: | 0% |
| Tumor: | 40% |
| Tumor Hypo/Acellular Stroma: | 0% |
| Tumor Hypercellular Stroma: | 10% |
| Necrosis: | 0% |
| Pathology Verification notes from H&E review: | Tumor Stroma (Cellular): Desmoplastic reaction; Non Tumor Structures: 100% Muscle |
| CASE Diagnosis (from medical center path report): | Adenocarcinoma of stomach |
| Age: | 65 |
| Gender: | Female |
| Tumor Grade: | AJCC G3: Poorly differentiated |



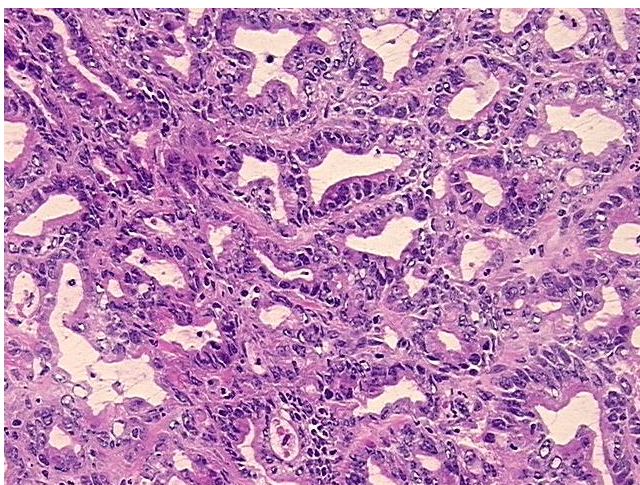
[View online »](#)

| | |
|------------------------------|--|
| Minimum Stage Grouping: | II |
| T (Extent of Primary Tumor): | T1 |
| N (Lymph node metastasis): | N2 |
| M (Distant metastasis): | MX |
| Storage: | Store frozen tissue sections at -80°C. |
| Stability: | All frozen tissue sections are stable for 1 year from date of purchase if stored at -80°C without repeated freeze/thaws. |

Product images:



4x Image



20x Image