

Product datasheet for **CS640797**

Frozen Tissue Sections, Lung

Product data:

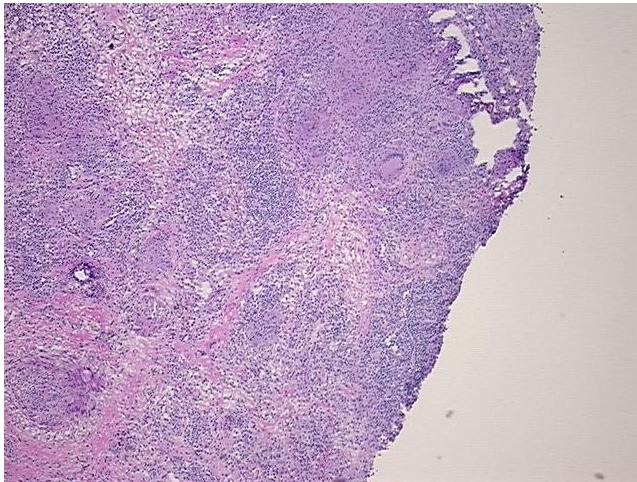
Product Type:	Frozen Sections
Disease State:	Other Disease
Diagnosis Category:	Granuloma
Tissue:	Lung
Frozen Sample ID:	FR0003346A
Case ID:	CU0000012066
Tissue of Origin:	Lung
Site of Finding:	Lung
Appearance:	L
Sample Diagnosis (from Pathology Verification):	Granuloma of lung, necrotizing
Normal:	0%
Lesional:	100%
Tumor:	0%
Tumor Hypo/Acellular Stroma:	0%
Tumor Hypercellular Stroma:	0%
Necrosis:	0%
CASE Diagnosis (from medical center path report):	Tumor of lung, carcinoid
Age:	79
Gender:	Female
Tumor Grade:	Not Reported
Minimum Stage Grouping:	Not Reported



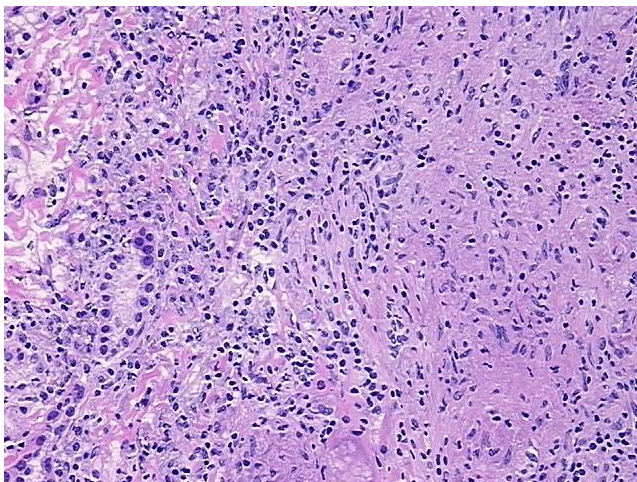
[View online »](#)

T (Extent of Primary Tumor):	Not Reported
N (Lymph node metastasis):	Not Reported
M (Distant metastasis):	Not Reported
Diagnostic Test Results:	CD227 ~ MUC1 ~ EMA ~ CA15-3 ! by IHC,Negative; GMS ~ Grocott methenamine silver stain,Negative; Acid-fast bacteria ~ AFB ~ Ziehl-Neelsen acid fast,Negative; Cytokeratin (Pan) ~ Keratin, Pan ! by IHC,Positive; Synaptophysin ~ SYN ! by IHC,P
Storage:	Store frozen tissue sections at -80°C.
Stability:	All frozen tissue sections are stable for 1 year from date of purchase if stored at -80°C without repeated freeze/thaws.

Product images:



4x Image



20x Image