

## Product datasheet for **CS640740**

### Frozen Tissue Sections, Endometriotic tissue

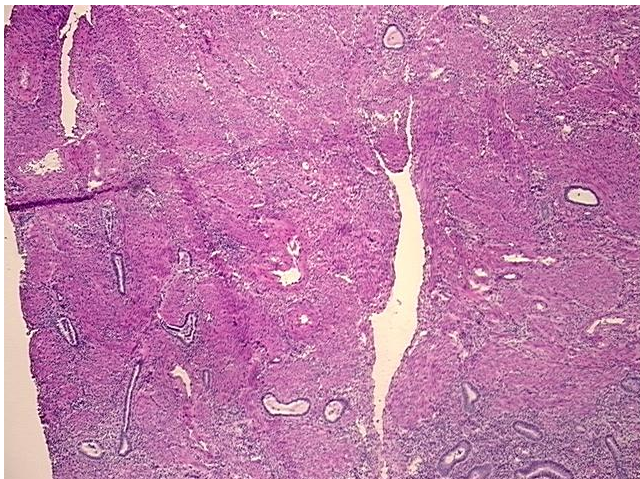
#### Product data:

Product Type:	Frozen Sections
Disease State:	Other Disease
Diagnosis Category:	Adenosis
Tissue:	Myometrium
Frozen Sample ID:	FR00033301
Case ID:	CU0000012056
Tissue of Origin:	Endometriotic tissue
Site of Finding:	Uterus
Appearance:	L
Sample Diagnosis (from Pathology Verification):	Adenomyosis of myometrium
Normal:	90%
Lesional:	10%
Tumor:	0%
Tumor Hypo/Acellular Stroma:	0%
Tumor Hypercellular Stroma:	0%
Necrosis:	0%
Pathology Verification notes from H&E review:	Non Tumor Structures: 70% Myometrium, 30% proliferative endometrium
Age:	36
Gender:	Female
Storage:	Store frozen tissue sections at -80°C.
Stability:	All frozen tissue sections are stable for 1 year from date of purchase if stored at -80°C without repeated freeze/thaws.

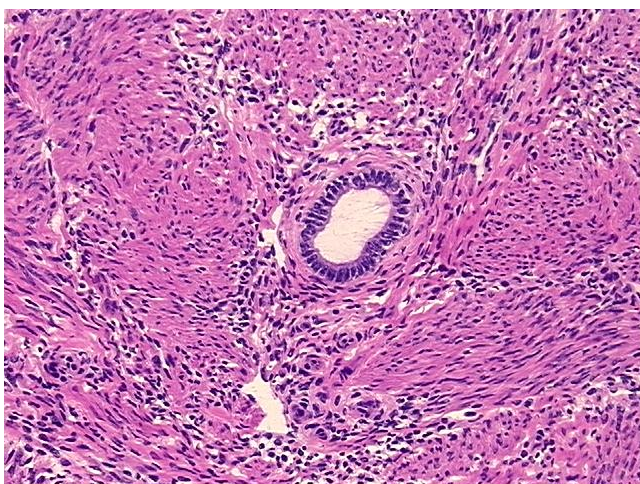


[View online »](#)

Product images:



4x Image



20x Image