

Product datasheet for **CS640463**

Frozen Tissue Sections, Colon

Product data:

| | |
|---|-------------------------------------|
| Product Type: | Frozen Sections |
| Disease State: | Cancer |
| Diagnosis Category: | Colorectal Cancer |
| Tissue: | Colon |
| Frozen Sample ID: | FR5B33D646 |
| Case ID: | CU0000011785 |
| Tissue of Origin: | Colon |
| Site of Finding: | Liver |
| Appearance: | Tumor |
| Sample Diagnosis (from Pathology Verification): | Adenocarcinoma of colon, metastatic |
| Normal: | 0% |
| Lesional: | 0% |
| Tumor: | 30% |
| Tumor Hypo/Acellular Stroma: | 0% |
| Tumor Hypercellular Stroma: | 20% |
| Necrosis: | 50% |
| CASE Diagnosis (from medical center path report): | Adenocarcinoma of colon, metastatic |
| Age: | 72 |
| Gender: | Male |
| Tumor Grade: | AJCC G2: Moderately differentiated |
| Minimum Stage Grouping: | IV |



[View online »](#)

T (Extent of Primary Tumor): pTX

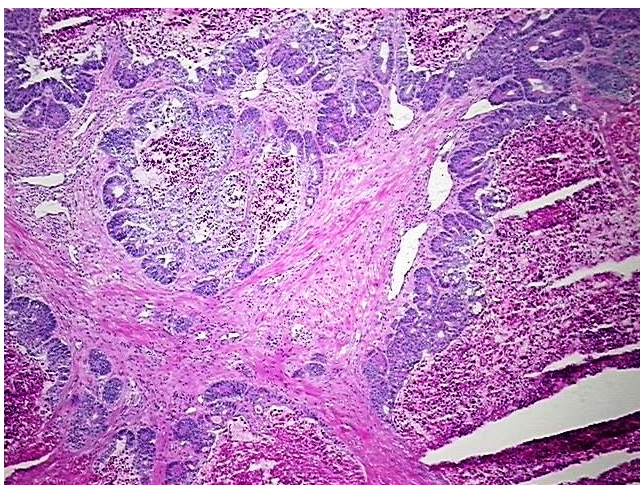
N (Lymph node metastasis): pNX

M (Distant metastasis): pM1

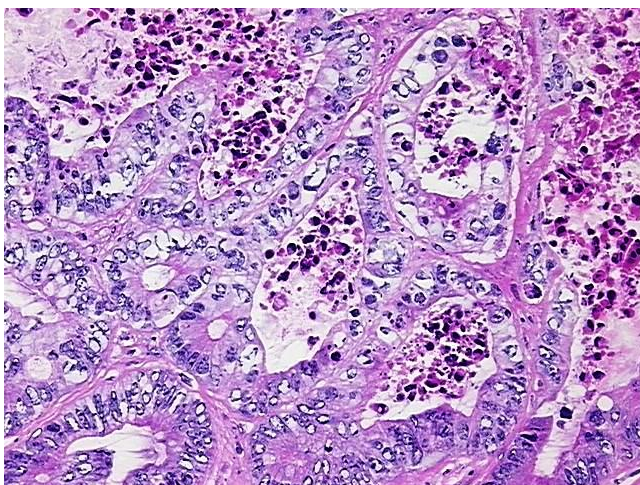
Storage: Store frozen tissue sections at -80°C.

Stability: All frozen tissue sections are stable for 1 year from date of purchase if stored at -80°C without repeated freeze/thaws.

Product images:



4x Image



20x Image