

Product datasheet for **CS640460**

Frozen Tissue Sections, Colon

Product data:

Product Type:	Frozen Sections
Disease State:	Cancer
Diagnosis Category:	Colorectal Cancer
Tissue:	Colon
Frozen Sample ID:	FR5B33D642
Case ID:	CU0000011785
Tissue of Origin:	Colon
Site of Finding:	Liver
Appearance:	Tumor
Sample Diagnosis (from Pathology Verification):	Adenocarcinoma of colon, metastatic
Normal:	0%
Lesional:	0%
Tumor:	30%
Tumor Hypo/Acellular Stroma:	0%
Tumor Hypercellular Stroma:	20%
Necrosis:	50%
CASE Diagnosis (from medical center path report):	Adenocarcinoma of colon, metastatic
Age:	72
Gender:	Male
Tumor Grade:	AJCC G2: Moderately differentiated
Minimum Stage Grouping:	IV



[View online »](#)

T (Extent of Primary Tumor): pTX

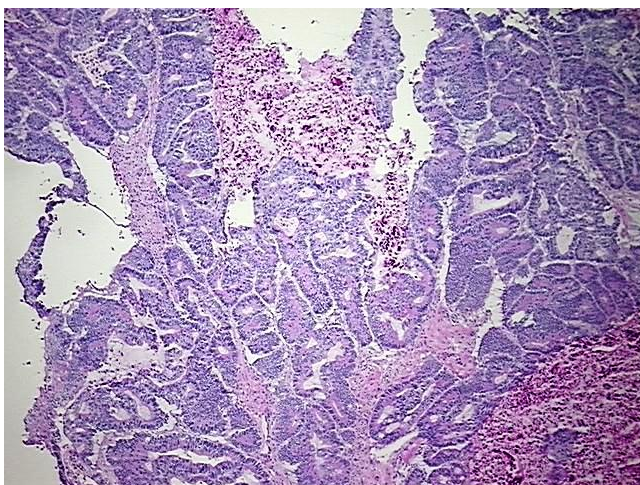
N (Lymph node metastasis): pNX

M (Distant metastasis): pM1

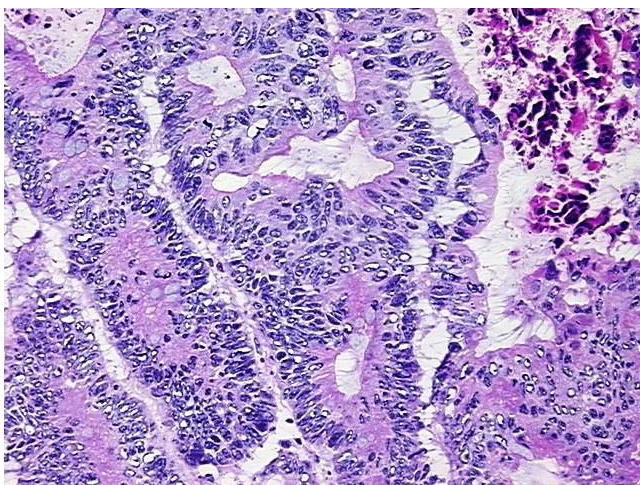
Storage: Store frozen tissue sections at -80°C.

Stability: All frozen tissue sections are stable for 1 year from date of purchase if stored at -80°C without repeated freeze/thaws.

Product images:



4x Image



20x Image