

## Product datasheet for **CS640261**

### Frozen Tissue Sections, Bone: humerus

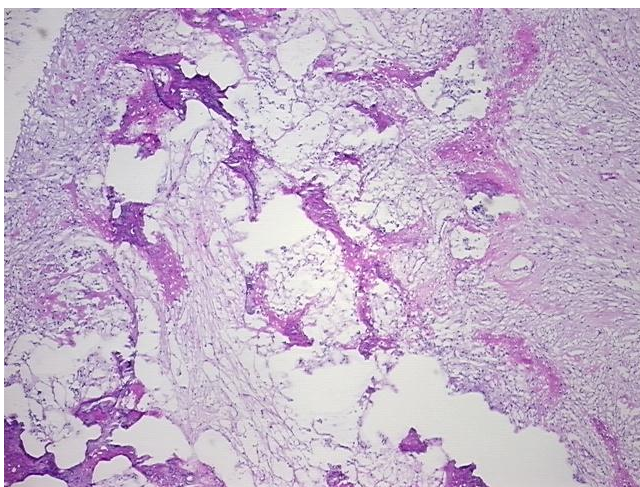
#### Product data:

Product Type:	Frozen Sections
Disease State:	Cancer
Diagnosis Category:	Sarcoma
Tissue:	Bone
Frozen Sample ID:	FR00035AA1
Case ID:	CU0000011772
Tissue of Origin:	Bone: humerus
Site of Finding:	Bone: humerus
Appearance:	T
Sample Diagnosis (from Pathology Verification):	Osteosarcoma, parosteal
Normal:	2%
Lesional:	0%
Tumor:	98%
Tumor Hypo/Acellular Stroma:	0%
Tumor Hypercellular Stroma:	0%
Necrosis:	0%
CASE Diagnosis (from medical center path report):	Osteosarcoma, parosteal
Age:	24
Gender:	Male
Tumor Grade:	AJCC G2: Moderately differentiated
Minimum Stage Grouping:	IB

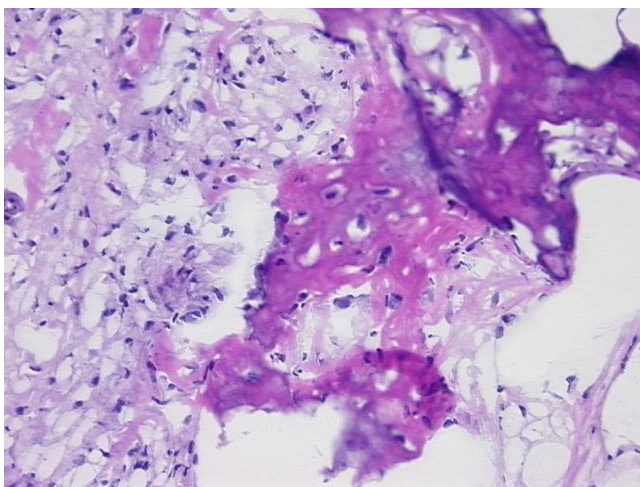


[View online »](#)

T (Extent of Primary Tumor):	T2
N (Lymph node metastasis):	NX
M (Distant metastasis):	MX
Storage:	Store frozen tissue sections at -80°C.
Stability:	All frozen tissue sections are stable for 1 year from date of purchase if stored at -80°C without repeated freeze/thaws.

**Product images:**

4x Image



20x Image