

Product datasheet for **CS640137**

Frozen Tissue Sections, Lung

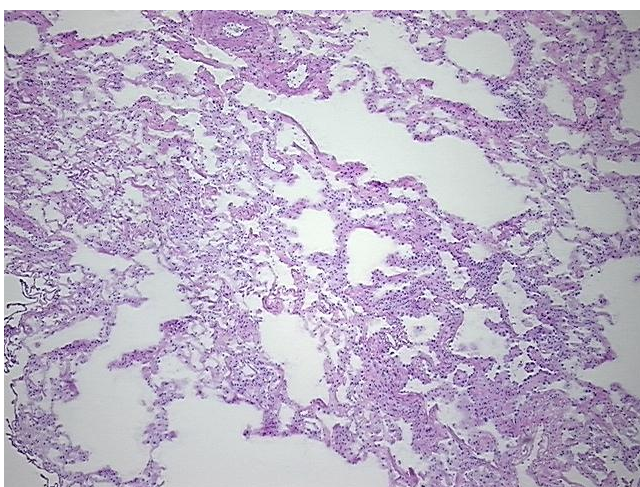
Product data:

| | |
|---|---|
| Product Type: | Frozen Sections |
| Disease State: | Other Disease |
| Diagnosis Category: | Chronic Obstructive Pulmonary Disease (COPD) |
| Tissue: | Lung |
| Frozen Sample ID: | FR0003591B |
| Case ID: | CU0000011765 |
| Tissue of Origin: | Lung |
| Site of Finding: | Lung |
| Appearance: | L |
| Sample Diagnosis (from Pathology Verification): | Emphysema, centrilobular |
| Normal: | 0% |
| Lesional: | 100% |
| Tumor: | 0% |
| Tumor Hypo/Acellular Stroma: | 0% |
| Tumor Hypercellular Stroma: | 0% |
| Necrosis: | 0% |
| Pathology Verification notes from H&E review: | Non Tumor Structures: 80% Alveoli, 10% Bronchioles, 10% Fibrovascular septa |
| CASE Diagnosis (from medical center path report): | Carcinoma of lung, pleomorphic |
| Age: | 67 |
| Gender: | Female |
| Tumor Grade: | Not Reported |

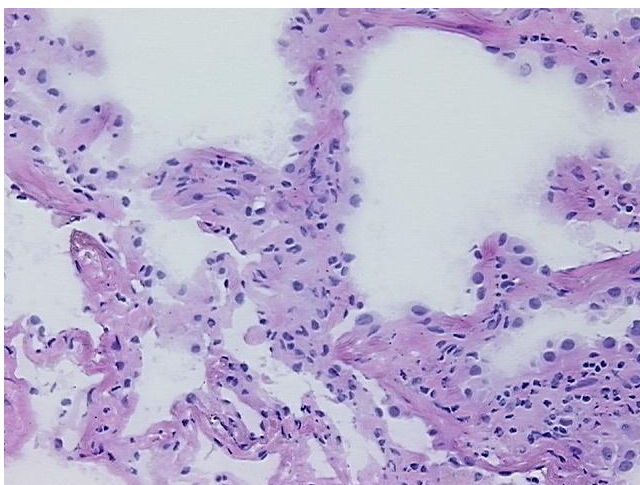


[View online »](#)

| | |
|------------------------------|--|
| Minimum Stage Grouping: | IB |
| T (Extent of Primary Tumor): | T2 |
| N (Lymph node metastasis): | N0 |
| M (Distant metastasis): | MX |
| Storage: | Store frozen tissue sections at -80°C. |
| Stability: | All frozen tissue sections are stable for 1 year from date of purchase if stored at -80°C without repeated freeze/thaws. |

Product images:

4x Image



20x Image