

Product datasheet for **CS640123**

Frozen Tissue Sections, Breast

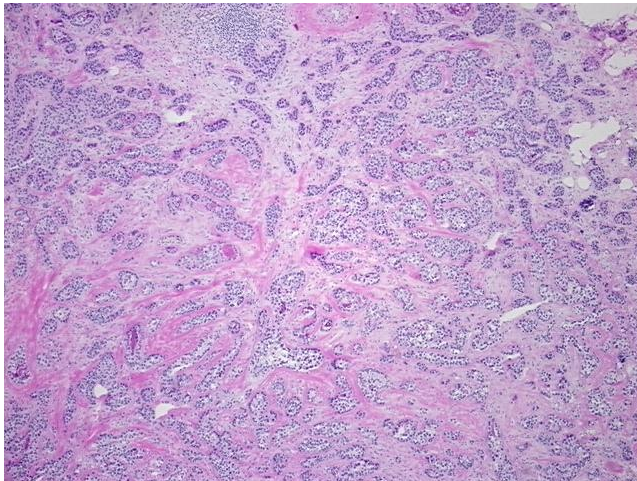
Product data:

| | |
|---|--|
| Product Type: | Frozen Sections |
| Disease State: | Cancer |
| Diagnosis Category: | Breast Cancer |
| Tissue: | Breast |
| Frozen Sample ID: | FR000358FC |
| Case ID: | CU0000011764 |
| Tissue of Origin: | Breast |
| Site of Finding: | Breast |
| Appearance: | T |
| Sample Diagnosis (from Pathology Verification): | Adenocarcinoma of breast, ductal (triple negative) |
| Normal: | 20% |
| Lesional: | 0% |
| Tumor: | 40% |
| Tumor Hypo/Acellular Stroma: | 20% |
| Tumor Hypercellular Stroma: | 20% |
| Necrosis: | 0% |
| Pathology Verification notes from H&E review: | Inflammation: Mild Lymphoplasmacytic infiltrate |
| CASE Diagnosis (from medical center path report): | Adenocarcinoma of breast, ductal |
| Age: | 65 |
| Gender: | Female |
| Tumor Grade: | Nottingham G2: 6-7 points Intermediate combined grade (moderately favorable) |

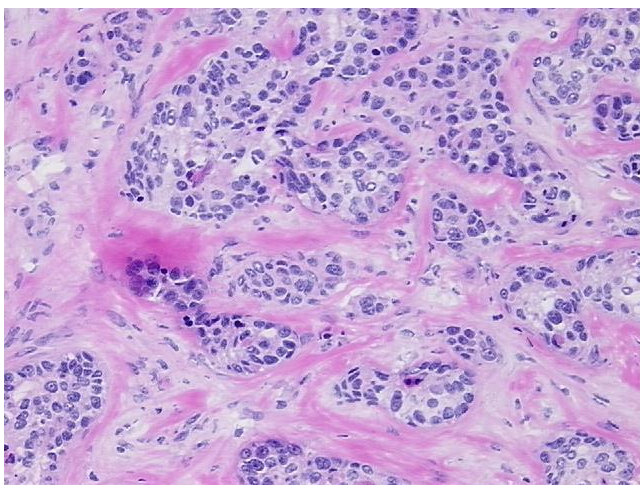


[View online »](#)

| | |
|------------------------------|---|
| Minimum Stage Grouping: | IIIA |
| T (Extent of Primary Tumor): | T3 |
| N (Lymph node metastasis): | N1 |
| M (Distant metastasis): | MX |
| Diagnostic Test Results: | EGFR, Amplified copy number; Progesterone receptor ~ PR ! by IHC, Negative; Estrogen receptor ~ ER ! by IHC, Negative; ERBB1 ~ EGFR ~ Epidermal growth factor receptor ! by IHC, Positive, moderate; HER2 ~ ERBB2 ~ Neu ! by IHC, Negative; Cytokeratin |
| Storage: | Store frozen tissue sections at -80°C. |
| Stability: | All frozen tissue sections are stable for 1 year from date of purchase if stored at -80°C without repeated freeze/thaws. |

Product images:

4x Image



20x Image