

## Product datasheet for **CS639853**

### Frozen Tissue Sections, Colon: rectosigmoid

#### Product data:

|                                                   |                                    |
|---------------------------------------------------|------------------------------------|
| Product Type:                                     | Frozen Sections                    |
| Disease State:                                    | Cancer                             |
| Diagnosis Category:                               | Colorectal Cancer                  |
| Tissue:                                           | Colon                              |
| Frozen Sample ID:                                 | FR5B33C129                         |
| Case ID:                                          | CU0000011746                       |
| Tissue of Origin:                                 | Colon: rectosigmoid                |
| Site of Finding:                                  | Colon: rectosigmoid                |
| Appearance:                                       | T                                  |
| Sample Diagnosis (from Pathology Verification):   | Adenocarcinoma of colon            |
| Normal:                                           | 0%                                 |
| Lesional:                                         | 0%                                 |
| Tumor:                                            | 30%                                |
| Tumor Hypo/Acellular Stroma:                      | 0%                                 |
| Tumor Hypercellular Stroma:                       | 40%                                |
| Necrosis:                                         | 30%                                |
| CASE Diagnosis (from medical center path report): | Adenocarcinoma of colon            |
| Age:                                              | 85                                 |
| Gender:                                           | Male                               |
| Tumor Grade:                                      | AJCC G2: Moderately differentiated |
| Minimum Stage Grouping:                           | IIA                                |



[View online »](#)

T (Extent of Primary Tumor): T3

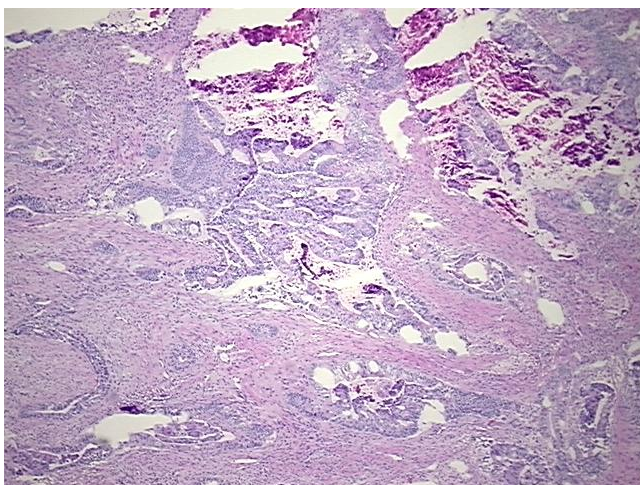
N (Lymph node metastasis): N0

M (Distant metastasis): MX

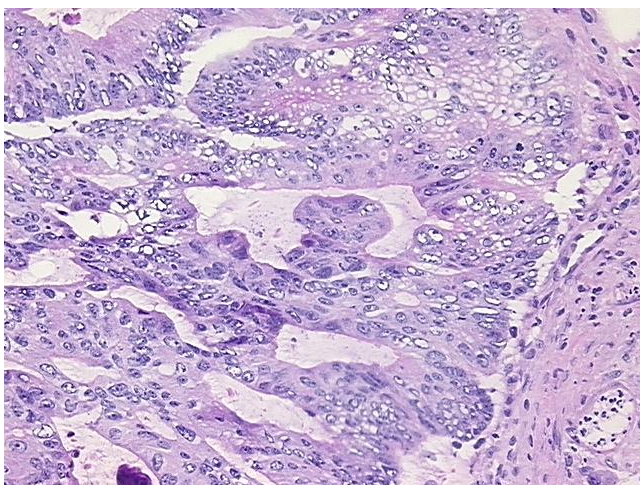
Storage: Store frozen tissue sections at -80°C.

Stability: All frozen tissue sections are stable for 1 year from date of purchase if stored at -80°C without repeated freeze/thaws.

### Product images:



4x Image



20x Image