

Product datasheet for CS639784

Frozen Tissue Sections, Breast

Product data:

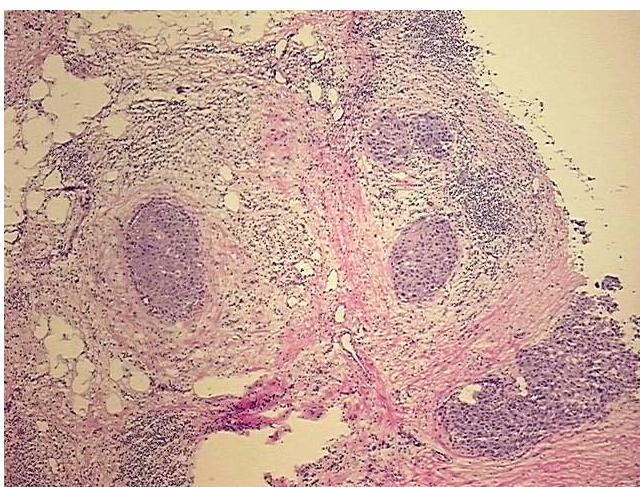
Product Type:	Frozen Sections
Disease State:	Cancer
Diagnosis Category:	Breast Cancer
Tissue:	Breast
Frozen Sample ID:	FR5B33C06C
Case ID:	CU0000011737
Tissue of Origin:	Breast
Site of Finding:	Breast
Appearance:	Tumor
Sample Diagnosis (from Pathology Verification):	Carcinoma in situ of breast, ductal, solid
Normal:	0%
Lesional:	0%
Tumor:	45%
Tumor Hypo/Acellular Stroma:	0%
Tumor Hypercellular Stroma:	54%
Necrosis:	1%
Pathology Verification notes from H&E review:	Tumor Stroma (Cellular): Inflammatory cells
CASE Diagnosis (from medical center path report):	Adenocarcinoma of breast, ductal
Age:	74
Gender:	Female
Tumor Grade:	Nottingham G2: 6-7 points Intermediate combined grade (moderately favorable)



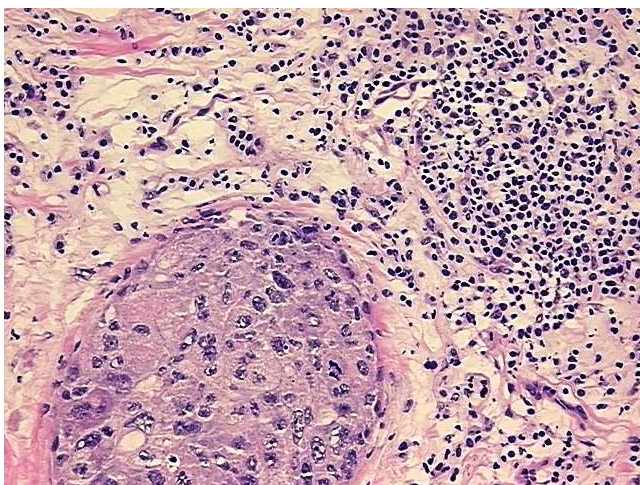
[View online »](#)

Minimum Stage Grouping:	I
T (Extent of Primary Tumor):	pT1
N (Lymph node metastasis):	pN0
M (Distant metastasis):	pMX
Storage:	Store frozen tissue sections at -80°C.
Stability:	All frozen tissue sections are stable for 1 year from date of purchase if stored at -80°C without repeated freeze/thaws.

Product images:



4x Image



20x Image