

Product datasheet for **CS639501**

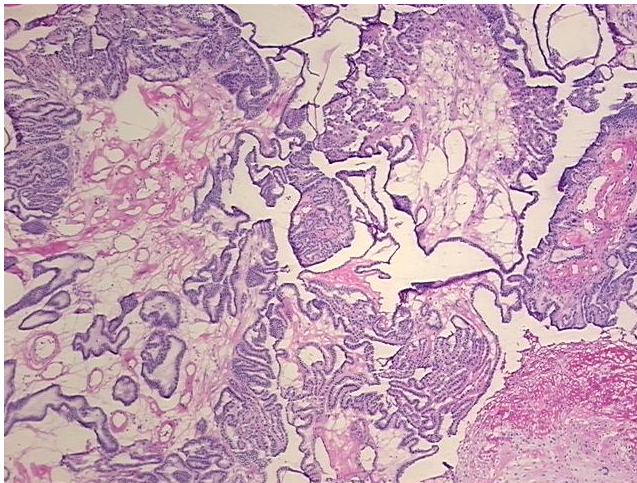
Frozen Tissue Sections, Ovary: left

Product data:

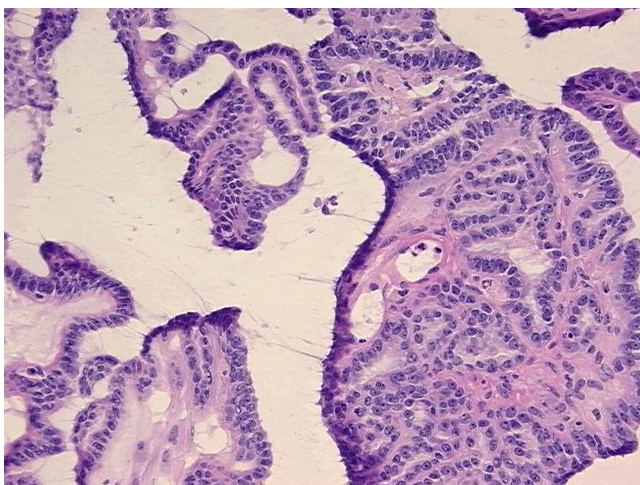
| | |
|---|------------------------------------|
| Product Type: | Frozen Sections |
| Disease State: | Other Disease |
| Diagnosis Category: | Borderline Ovarian Tumor |
| Tissue: | Ovary |
| Frozen Sample ID: | FR5B33BD96 |
| Case ID: | CU0000011710 |
| Tissue of Origin: | Ovary: left |
| Site of Finding: | Ovary: left |
| Appearance: | T |
| Sample Diagnosis (from Pathology Verification): | Tumor of ovary, serous, borderline |
| Normal: | 0% |
| Lesional: | 0% |
| Tumor: | 60% |
| Tumor Hypo/Acellular Stroma: | 10% |
| Tumor Hypercellular Stroma: | 30% |
| Necrosis: | 0% |
| CASE Diagnosis (from medical center path report): | Tumor of ovary, serous, borderline |



| | |
|------------------------------|--|
| Age: | 54 |
| Gender: | Female |
| Tumor Grade: | AJCC GB: Borderline malignancy |
| Minimum Stage Grouping: | IIIA |
| T (Extent of Primary Tumor): | T3a |
| N (Lymph node metastasis): | N0 |
| M (Distant metastasis): | MX |
| Storage: | Store frozen tissue sections at -80°C. |
| Stability: | All frozen tissue sections are stable for 1 year from date of purchase if stored at -80°C without repeated freeze/thaws. |

Product images:

4x Image



20x Image