

## Product datasheet for CS639476

### Frozen Tissue Sections, Brain

#### Product data:

Product Type:	Frozen Sections
Disease State:	Cancer
Diagnosis Category:	Brain Cancer
Tissue:	Brain
Frozen Sample ID:	FR0002F988
Case ID:	CU0000011708
Tissue of Origin:	Brain
Site of Finding:	Brain
Appearance:	Tumor
Sample Diagnosis (from Pathology Verification):	Oligodendroglioma, anaplastic
Normal:	5%
Lesional:	0%
Tumor:	85%
Tumor Hypo/Acellular Stroma:	0%
Tumor Hypercellular Stroma:	10%
Necrosis:	0%
CASE Diagnosis (from medical center path report):	Oligodendroglioma, anaplastic
Age:	44
Gender:	Female
Tumor Grade:	WHO Grade III
Minimum Stage Grouping:	Not Reported

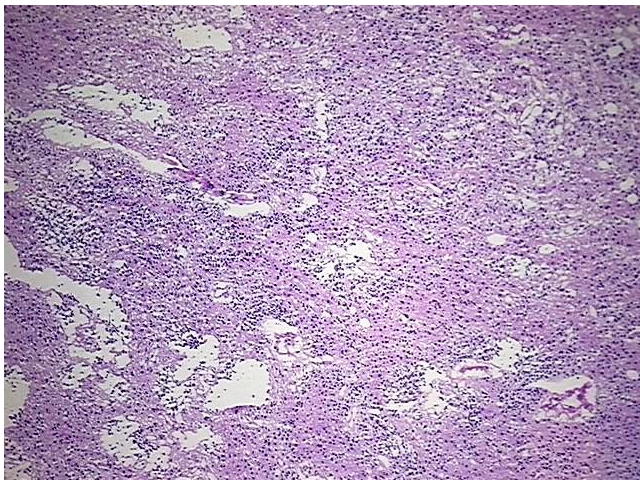


[View online »](#)

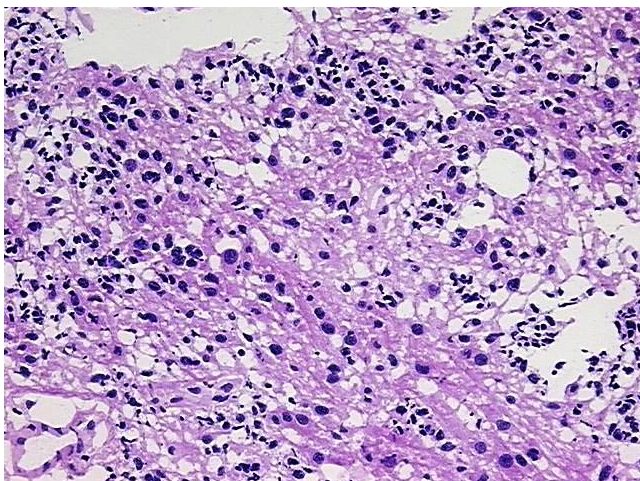
**Storage:** Store frozen tissue sections at -80°C.

**Stability:** All frozen tissue sections are stable for 1 year from date of purchase if stored at -80°C without repeated freeze/thaws.

**Product images:**



4x Image



20x Image