

Product datasheet for **CS639473**

Frozen Tissue Sections, Brain

Product data:

Product Type:	Frozen Sections
Disease State:	Cancer
Diagnosis Category:	Brain Cancer
Tissue:	Brain
Frozen Sample ID:	FR0002F983
Case ID:	CU0000011708
Tissue of Origin:	Brain
Site of Finding:	Brain
Appearance:	Tumor
Sample Diagnosis (from Pathology Verification):	Oligodendroglioma, anaplastic
Normal:	5%
Lesional:	0%
Tumor:	85%
Tumor Hypo/Acellular Stroma:	0%
Tumor Hypercellular Stroma:	10%
Necrosis:	0%
CASE Diagnosis (from medical center path report):	Oligodendroglioma, anaplastic
Age:	44
Gender:	Female
Tumor Grade:	WHO Grade III
Minimum Stage Grouping:	Not Reported

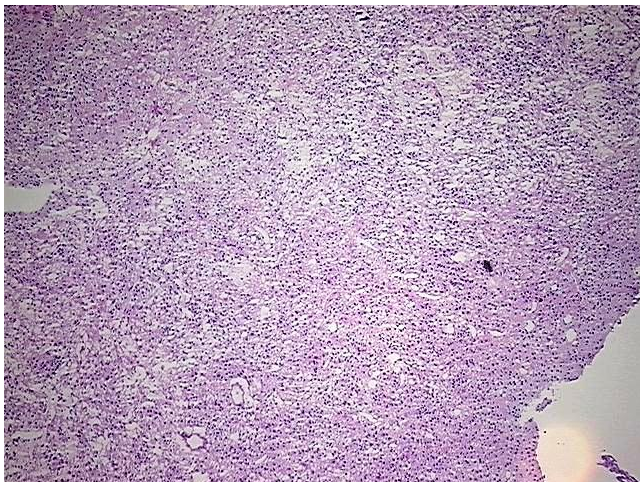


[View online »](#)

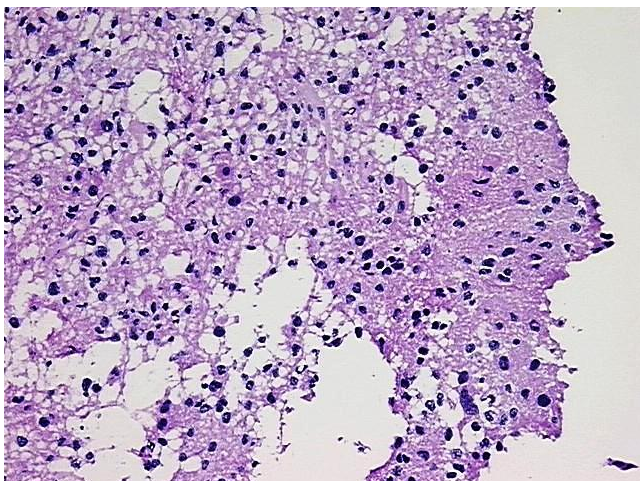
Storage: Store frozen tissue sections at -80°C.

Stability: All frozen tissue sections are stable for 1 year from date of purchase if stored at -80°C without repeated freeze/thaws.

Product images:



4x Image



20x Image