

Product datasheet for **CS639324**

Frozen Tissue Sections, Colon

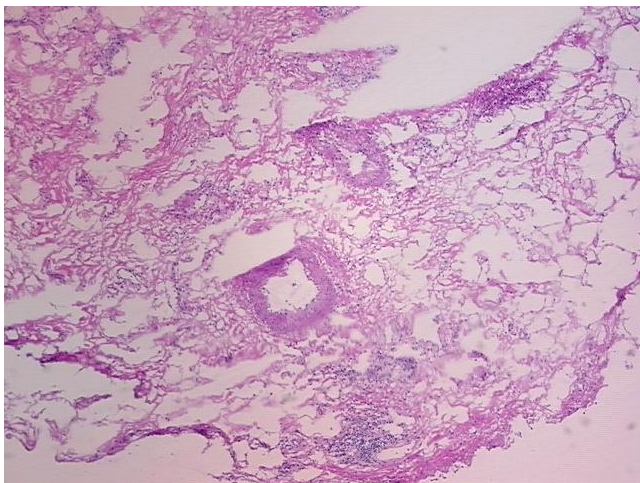
Product data:

Product Type:	Frozen Sections
Disease State:	Other Disease
Diagnosis Category:	Inflammatory Bowel Disease (IBD)
Tissue:	Colon
Frozen Sample ID:	FR5B33F65C
Case ID:	CU0000011533
Tissue of Origin:	Colon
Site of Finding:	Colon
Appearance:	L
Sample Diagnosis (from Pathology Verification):	Crohns disease
Normal:	0%
Lesional:	100%
Tumor:	0%
Tumor Hypo/Acellular Stroma:	0%
Tumor Hypercellular Stroma:	0%
Necrosis:	0%
Pathology Verification notes from H&E review:	lesion: 70% submucosa, 30% muscle
CASE Diagnosis (from medical center path report):	Crohns disease
Age:	41
Gender:	Female
Storage:	Store frozen tissue sections at -80°C.

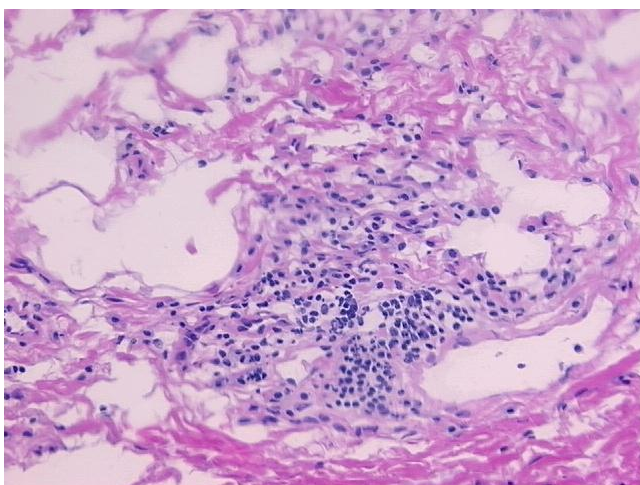

[View online »](#)

Stability: All frozen tissue sections are stable for 1 year from date of purchase if stored at -80°C without repeated freeze/thaws.

Product images:



4x Image



20x Image