

Product datasheet for **CS639267**

Frozen Tissue Sections, Mediastinum

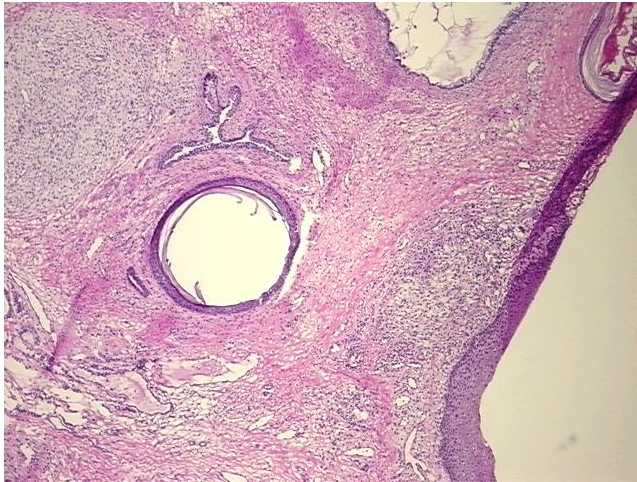
Product data:

Product Type:	Frozen Sections
Disease State:	Other Disease
Diagnosis Category:	Germ Cell Tumor
Tissue:	Mediastinum
Frozen Sample ID:	FR0002EB27
Case ID:	CU0000011529
Tissue of Origin:	Mediastinum
Site of Finding:	Chest wall
Appearance:	T
Sample Diagnosis (from Pathology Verification):	Tumor of mediastinum, mixed germ cell
Normal:	30%
Lesional:	0%
Tumor:	30%
Tumor Hypo/Acellular Stroma:	20%
Tumor Hypercellular Stroma:	20%
Necrosis:	0%
Pathology Verification notes from H&E review:	Tumor: predominately mature teratoma
CASE Diagnosis (from medical center path report):	Tumor of mediastinum, mixed germ cell
Age:	19
Gender:	Male
Tumor Grade:	Not Reported

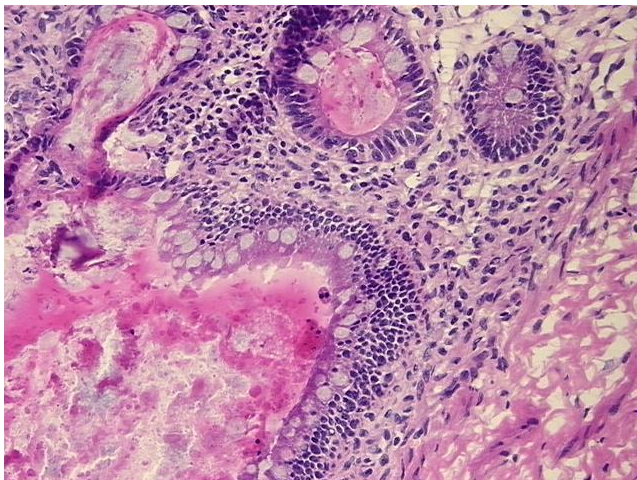


[View online »](#)

Minimum Stage Grouping:	Not Reported
T (Extent of Primary Tumor):	Not Reported
N (Lymph node metastasis):	Not Reported
M (Distant metastasis):	Not Reported
Diagnostic Test Results:	Alpha-1-fetoprotein ~ AFP ! by IHC, Positive, focal
Storage:	Store frozen tissue sections at -80°C.
Stability:	All frozen tissue sections are stable for 1 year from date of purchase if stored at -80°C without repeated freeze/thaws.

Product images:

4x Image



20x Image