

Product datasheet for CS639239

Frozen Tissue Sections, Soft tissue

Product data:

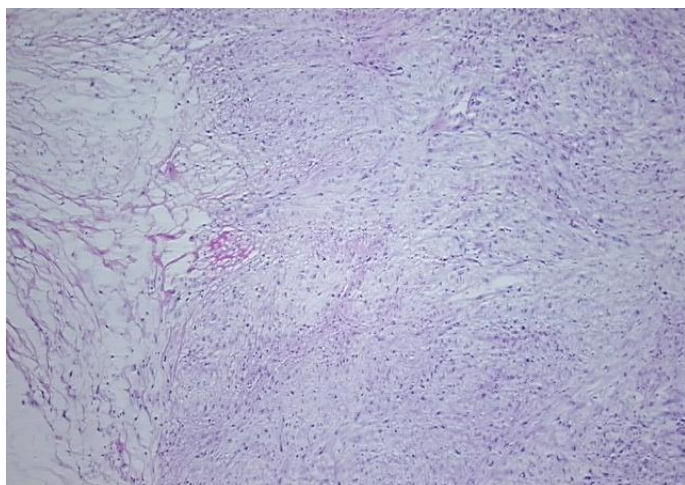
Product Type:	Frozen Sections
Disease State:	Cancer
Diagnosis Category:	Sarcoma
Tissue:	Soft tissue
Frozen Sample ID:	FR0002EB98
Case ID:	CU0000011526
Tissue of Origin:	Soft tissue
Site of Finding:	Leg
Appearance:	T
Sample Diagnosis (from Pathology Verification):	Myxofibrosarcoma of soft tissue
Normal:	0%
Lesional:	0%
Tumor:	50%
Tumor Hypo/Acellular Stroma:	40%
Tumor Hypercellular Stroma:	10%
Necrosis:	0%
Pathology Verification notes from H&E review:	Tumor Stroma (Hypo/Acellular): Myxoid
CASE Diagnosis (from medical center path report):	Myxofibrosarcoma of soft tissue
Age:	79
Gender:	Female
Tumor Grade:	AJCC G3: Poorly differentiated



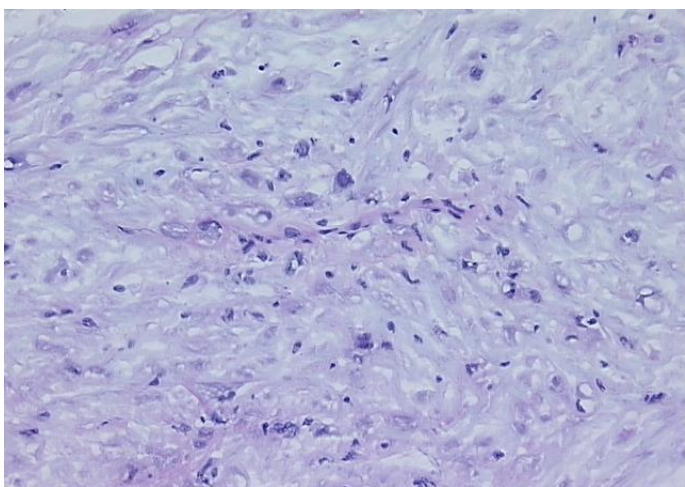
[View online »](#)

Minimum Stage Grouping:	III
T (Extent of Primary Tumor):	T2b
N (Lymph node metastasis):	NX
M (Distant metastasis):	MX
Diagnostic Test Results:	Smooth muscle actin ~ SMA ~ Alpha-SMA ! by IHC,Negative; HMB45 melanoma antigen ~ GP100 ! by IHC,Negative; S100 protein,Negative; Desmin ! by IHC,Negative; Cytokeratin AE1/AE3 ~ AE1/AE3 ! by IHC,Negative; MSA ~ Muscle Specific Actin,Negative
Storage:	Store frozen tissue sections at -80°C.
Stability:	All frozen tissue sections are stable for 1 year from date of purchase if stored at -80°C without repeated freeze/thaws.

Product images:



4x Image



20x Image