

Product datasheet for **CS638964**

Frozen Tissue Sections, Breast

Product data:

Product Type:	Frozen Sections
Disease State:	Cancer
Diagnosis Category:	Breast Cancer
Tissue:	Breast
Frozen Sample ID:	FR0002E3D5
Case ID:	CU0000011469
Tissue of Origin:	Breast
Site of Finding:	Chest wall
Appearance:	T
Sample Diagnosis (from Pathology Verification):	Adenocarcinoma, metastatic, consistent with breast primary
Normal:	70%
Lesional:	0%
Tumor:	25%
Tumor Hypo/Acellular Stroma:	0%
Tumor Hypercellular Stroma:	5%
Necrosis:	0%
Pathology Verification notes from H&E review:	Tumor Stroma (Cellular): Desmoplastic reaction; Inflammation: Moderate Lymphoplasmacytic infiltrate; Non Tumor Structures: 100% Subcutaneous tissue
CASE Diagnosis (from medical center path report):	Adenocarcinoma, metastatic, consistent with breast primary
Age:	45
Gender:	Female
Tumor Grade:	Not Reported


[View online »](#)

Minimum Stage Grouping: IV

T (Extent of Primary Tumor): TX

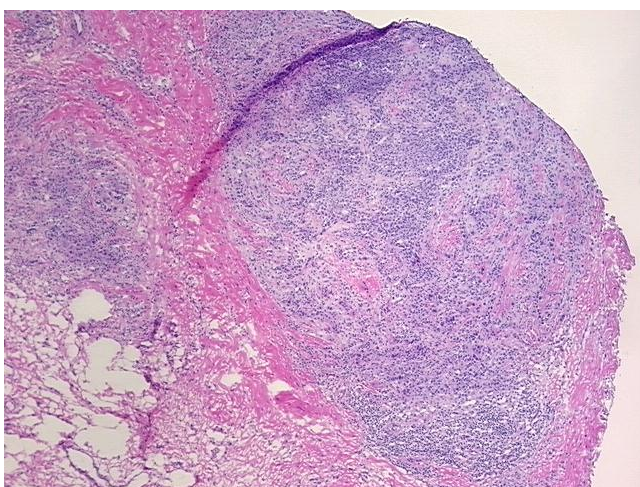
N (Lymph node metastasis): NX

M (Distant metastasis): M1

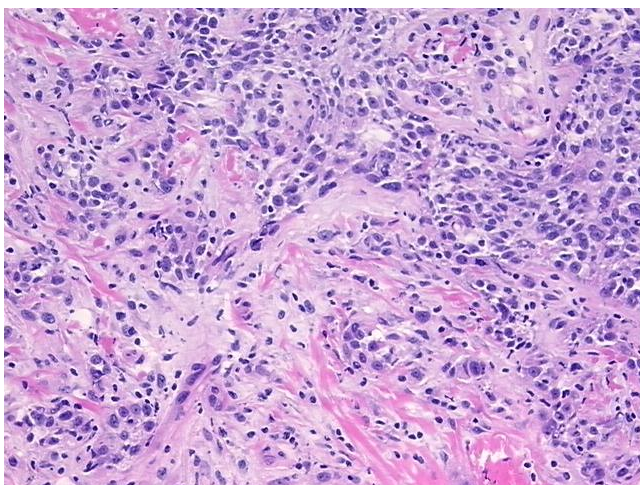
Storage: Store frozen tissue sections at -80°C.

Stability: All frozen tissue sections are stable for 1 year from date of purchase if stored at -80°C without repeated freeze/thaws.

Product images:



4x Image



20x Image