

Product datasheet for **CS638840**

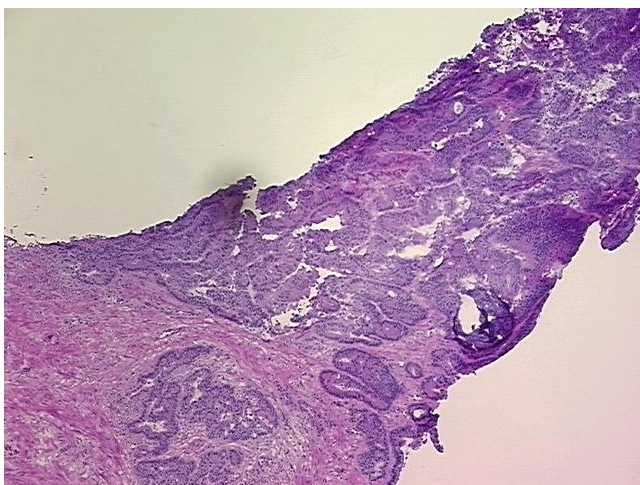
Frozen Tissue Sections, Colon: left

Product data:

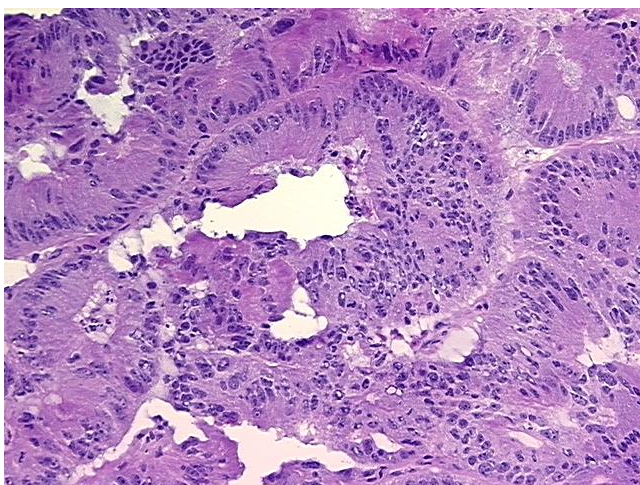
Product Type:	Frozen Sections
Disease State:	Cancer
Diagnosis Category:	Colorectal Cancer
Tissue:	Colon
Frozen Sample ID:	FR5B33F16A
Case ID:	CU0000011450
Tissue of Origin:	Colon: left
Site of Finding:	Colon: left
Appearance:	T
Sample Diagnosis (from Pathology Verification):	Adenocarcinoma of colon
Normal:	45%
Lesional:	0%
Tumor:	45%
Tumor Hypo/Acellular Stroma:	0%
Tumor Hypercellular Stroma:	5%
Necrosis:	5%
CASE Diagnosis (from medical center path report):	Adenocarcinoma of colon
Age:	75
Gender:	Female
Tumor Grade:	AJCC G2: Moderately differentiated
Minimum Stage Grouping:	IIIC


[View online »](#)

T (Extent of Primary Tumor):	T4
N (Lymph node metastasis):	N2
M (Distant metastasis):	MX
Storage:	Store frozen tissue sections at -80°C.
Stability:	All frozen tissue sections are stable for 1 year from date of purchase if stored at -80°C without repeated freeze/thaws.

Product images:


4x Image



20x Image